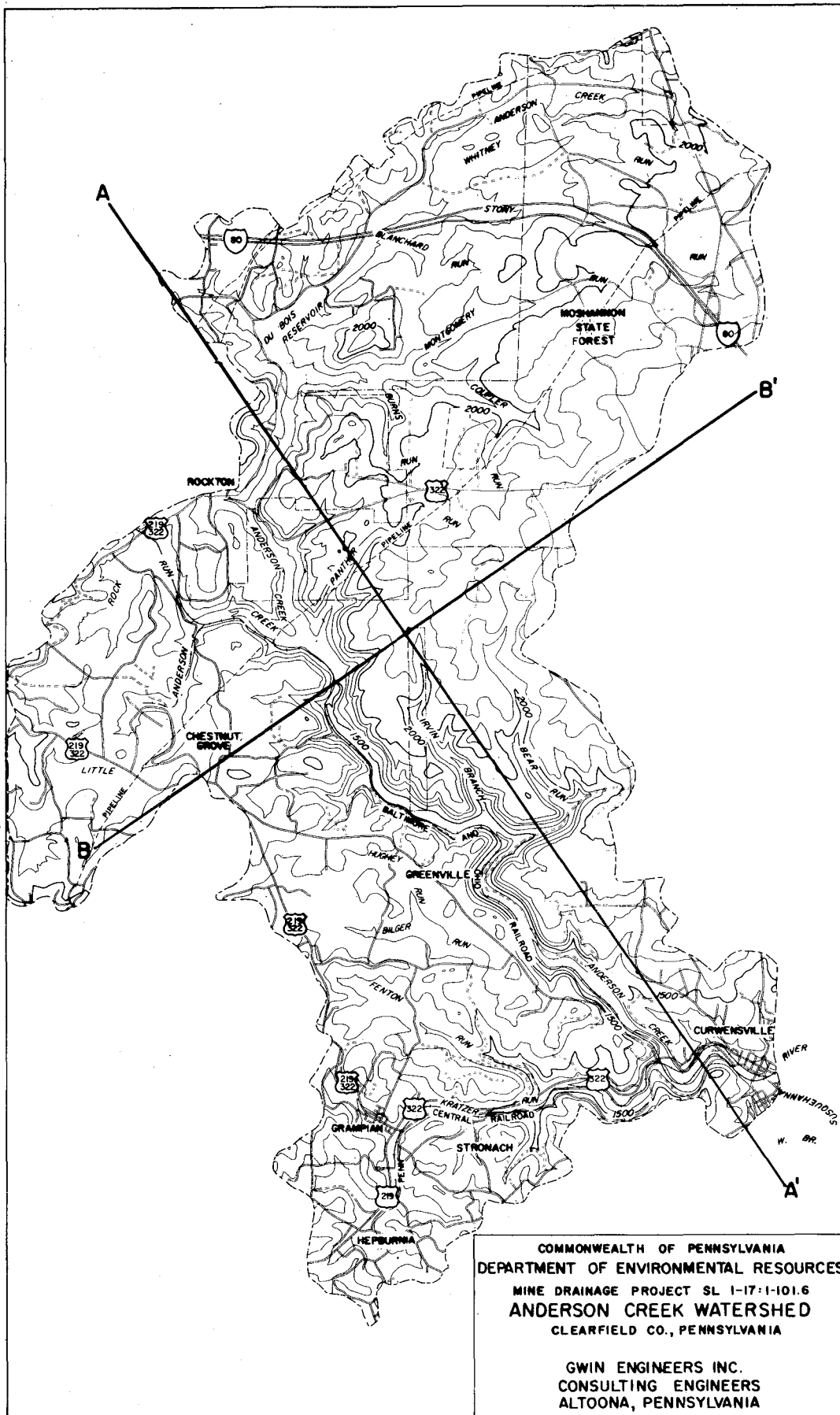
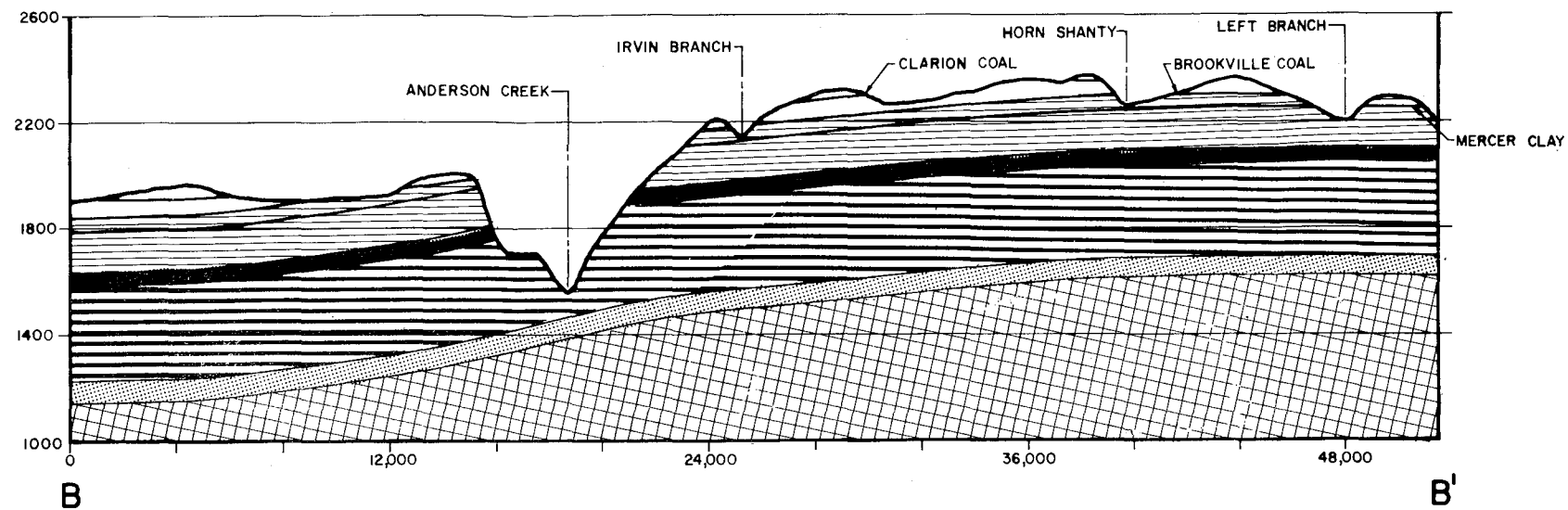


GEOLOGIC CROSS SECTIONS



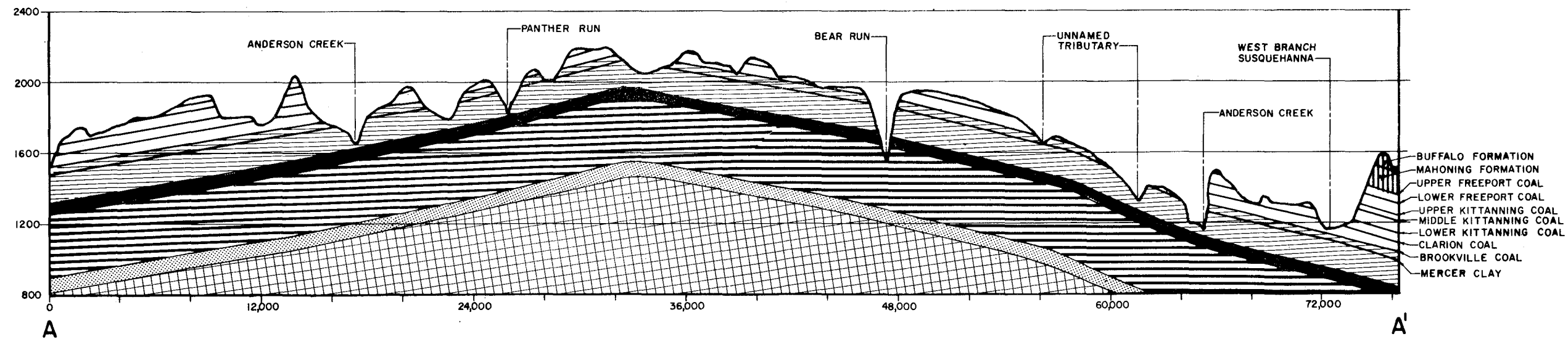
GENERALIZED STRATIGRAPHY
OF THE ANDERSON CREEK WATERSHED

FORMATION	MEMBER	COLUMNAR SECTION	APPROXIMATE THICKNESS	ROCK TYPE
CONEMAUGH	BUFFALO	[Vertical lines]	70'	SANDY SHALES SANDSTONES CONGLOMERATES
	MAHONING	[Vertical lines]	70'	COAL
ALLEGHENY	FREEPORT	[Horizontal lines]	300'	COAL CLAYS SHALES SANDSTONES
	KITTANNING	[Horizontal lines]		
	CLARION	[Horizontal lines]		
	BROOKVILLE	[Horizontal lines]		
POTTSVILLE	MERCER	[Horizontal lines]	200'	COAL CLAYS SHALES SANDSTONES CONGLOMERATES
	CONNEQUENESSING	[Horizontal lines]		
MAUCH CHUNK	UPPER	[Horizontal lines]	50'	SHALES
	LOWER	[Horizontal lines]		
POCONO	BURGOON	[Horizontal lines]	350'	SANDSTONES CONGLOMERATES
	PATTON	[Dotted pattern]	25'	RED SHALES
	SUB-BURGOON	[Cross-hatch pattern]	650'	SHALES SANDSTONES



NOTES:

THE STRATA OF THE LOWER POTTSVILLE AND UPPER MAUCH CHUNK ARE SO SIMILAR THAT THEY CANNOT BE READILY DIFFERENTIATED.
GEOLOGIC INTERPRETATION OF WATERSHED CROSS-SECTIONS IS BASED ON THE BEST INFORMATION CURRENTLY AVAILABLE.
HORIZONTAL AND VERTICAL DISTANCES ON CROSS-SECTIONS ARE GIVEN IN FEET.



GENERALIZED COLUMNAR SECTION OF EXPOSED ROCKS

System	Group	Formation	Member	Section	Character of Member	General Character of Formation
PENNSYLVANIAN	CONE MAUGH		Lower Mahoning sandstone		Sandstone and sandy shale sometimes separated by thin lenses of coal Red shale occurs -40' above Upper Freeport	Only the lower part of the formation is present - about 40'
	ALLEGHENY	Glen Richey Fm.	Upper Freeport coal		Widely persistent average thickness 3' to 3 1/2'	A variable sequence of shale, sandstone, limestone, clay, and valuable beds of coal. Average thickness is about 300'
			Lower Freeport coal		Variable, average 2' to 2 1/2' thick.	
		Laurel Run Fm.	Freeport s.s. Upper Kittanning coal		Thin, about 1' to 1 1/2' thick.	
		Mineral Springs Fm.	Middle Kittanning coal		About 3 seams present at this horizon. Usually 1' to 1 1/2' thick.	
		Millstone Fm.	Lower Kittanning coal		Very persistent. Average thickness 2' to 2 1/2'	
		POTTSVILLE	Curwensville Fm.	Clarion coal		
					Thin, variable.	
	Homewood s.s.				Massive s.s. often separated by shale.	
	Elliott Park Fm.	Connoquenessing s.s.	Mercer coal		Variable, often several thin beds present at this horizon.	
			Mercer clay		Fine grained, quite shaly in places almost completely replaced by sandy shale.	

