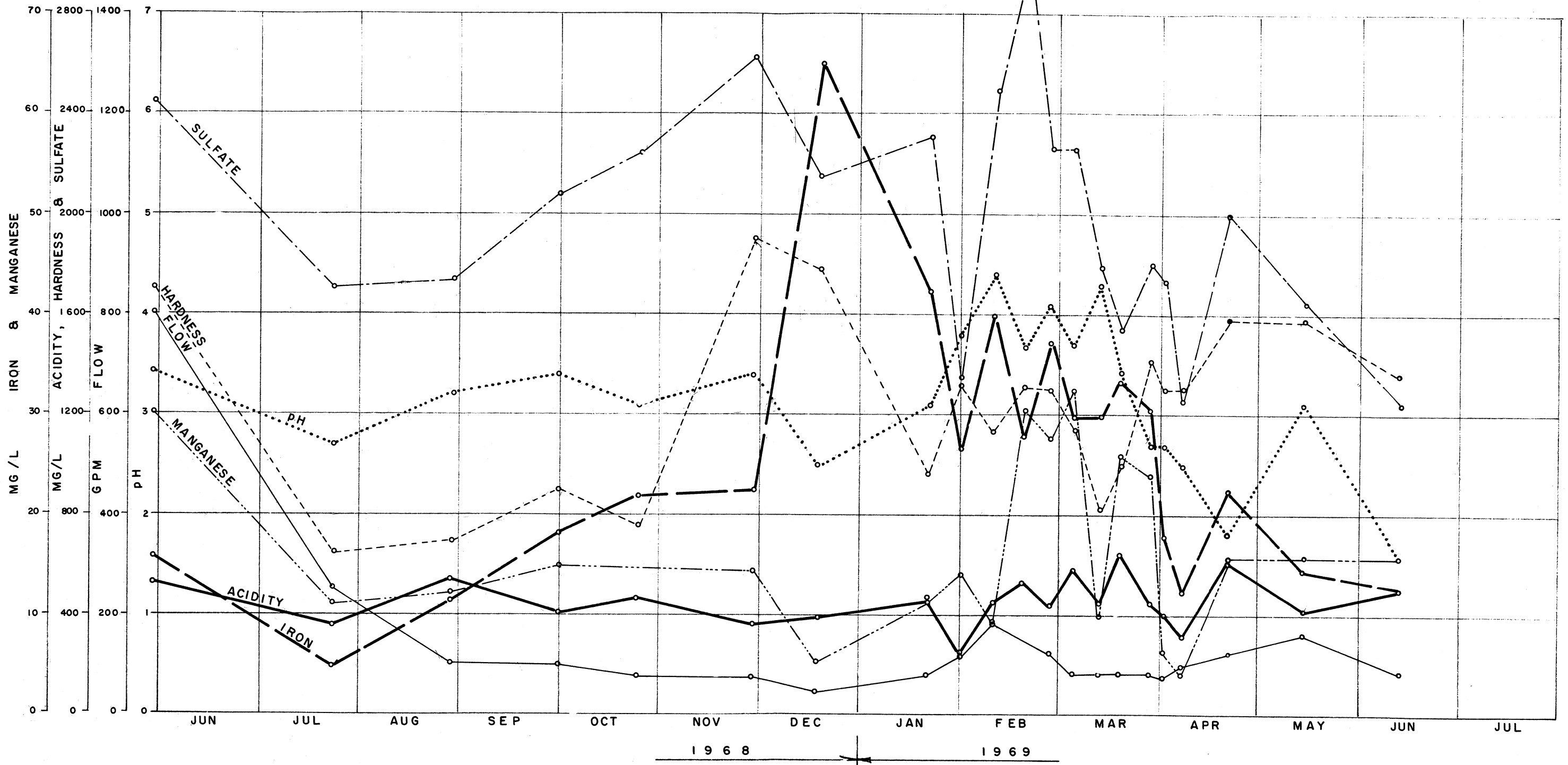
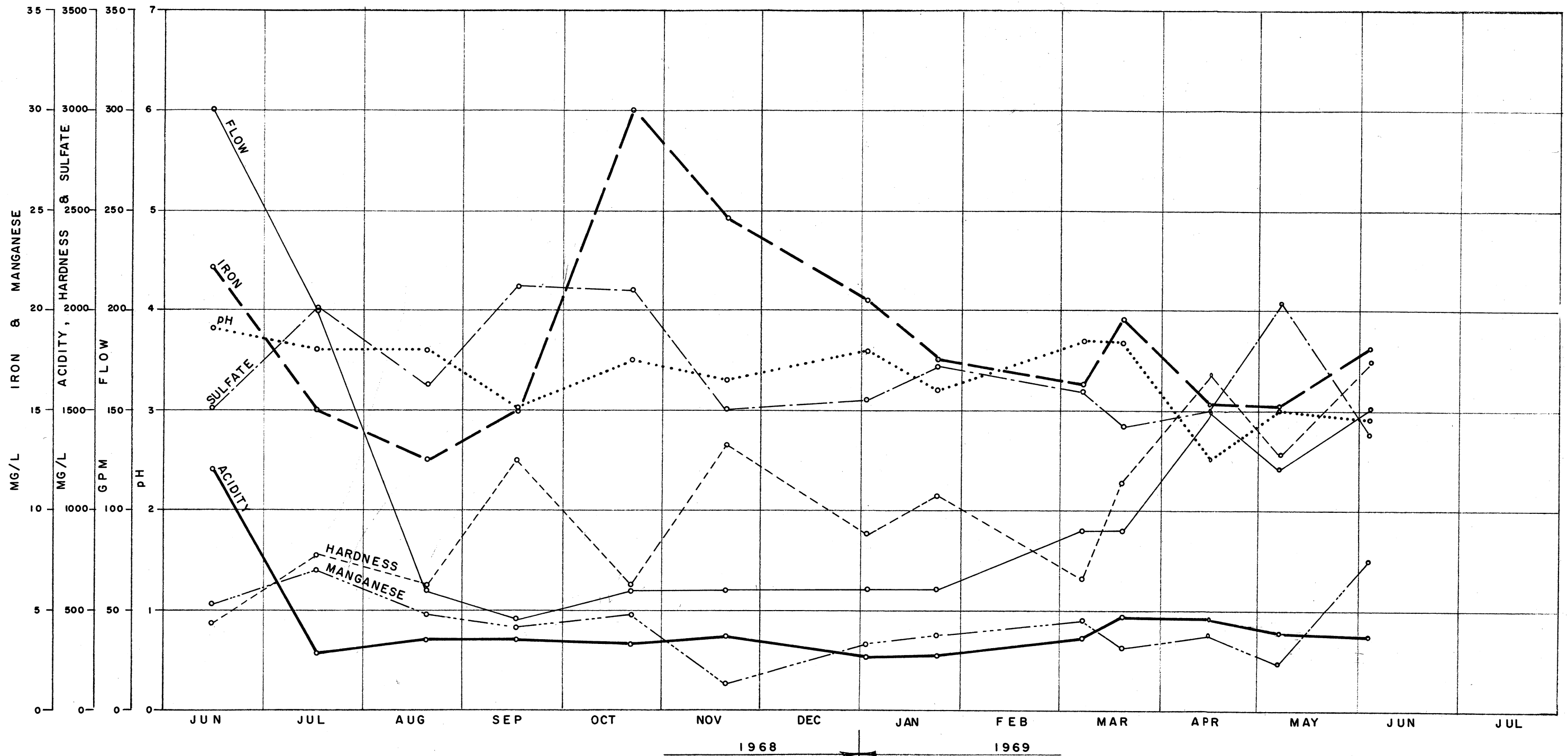


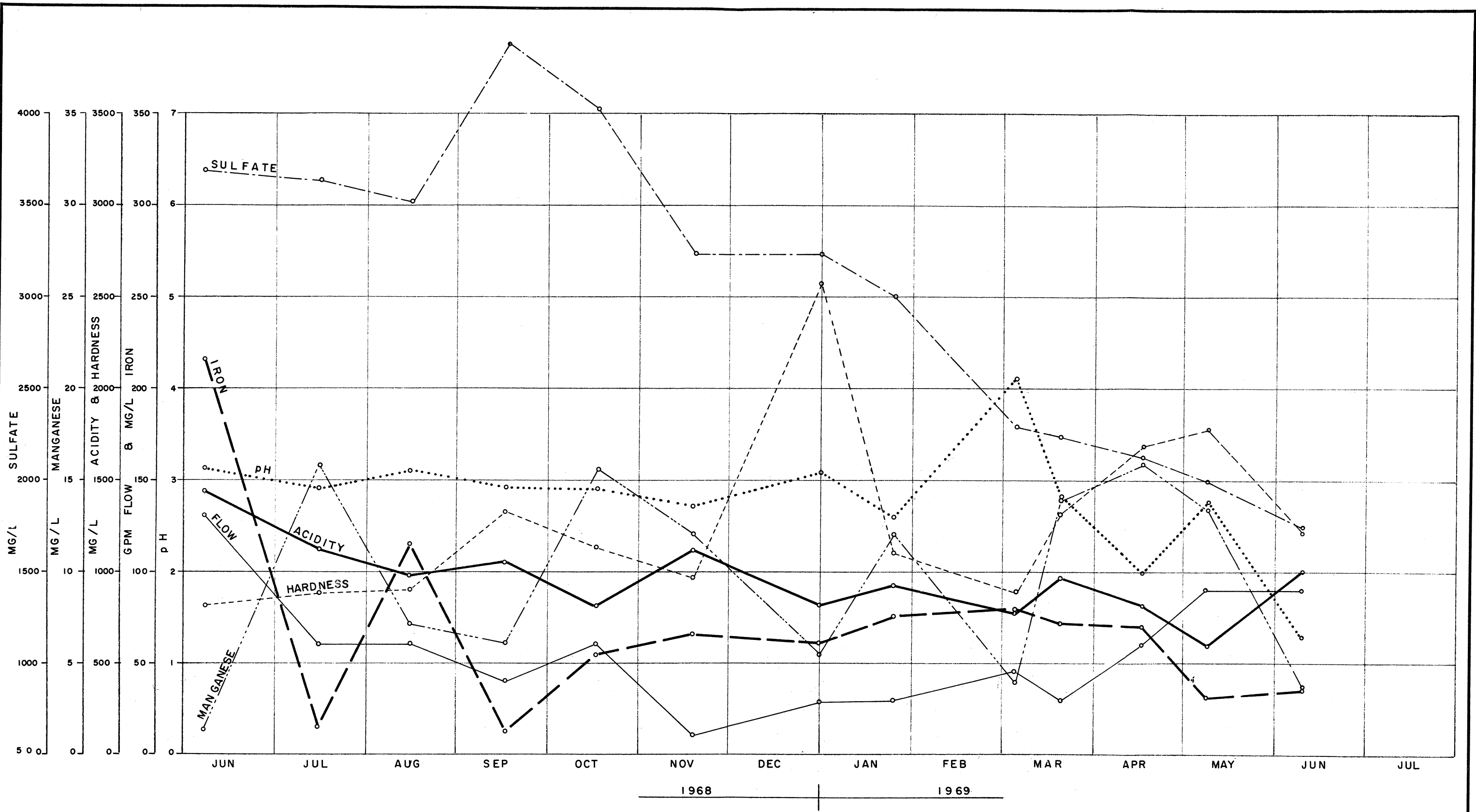
DATE: AUGUST 1969		CHARTIERS CREEK DRAINAGE BASIN ALLEGHENY and WASHINGTON COUNTIES, PENNSYLVANIA		WATER QUALITY SOURCE No. 4972
SCALE:				
DR: AP	CK: MTD	A. C. ACKENHEIL & ASSOCIATES, INC. CONSULTING ENGINEERS PITTSBURGH, PA., CHARLESTON, W. VA. & BALTIMORE, MD.		
DWG. NO. 68077 DII-10				



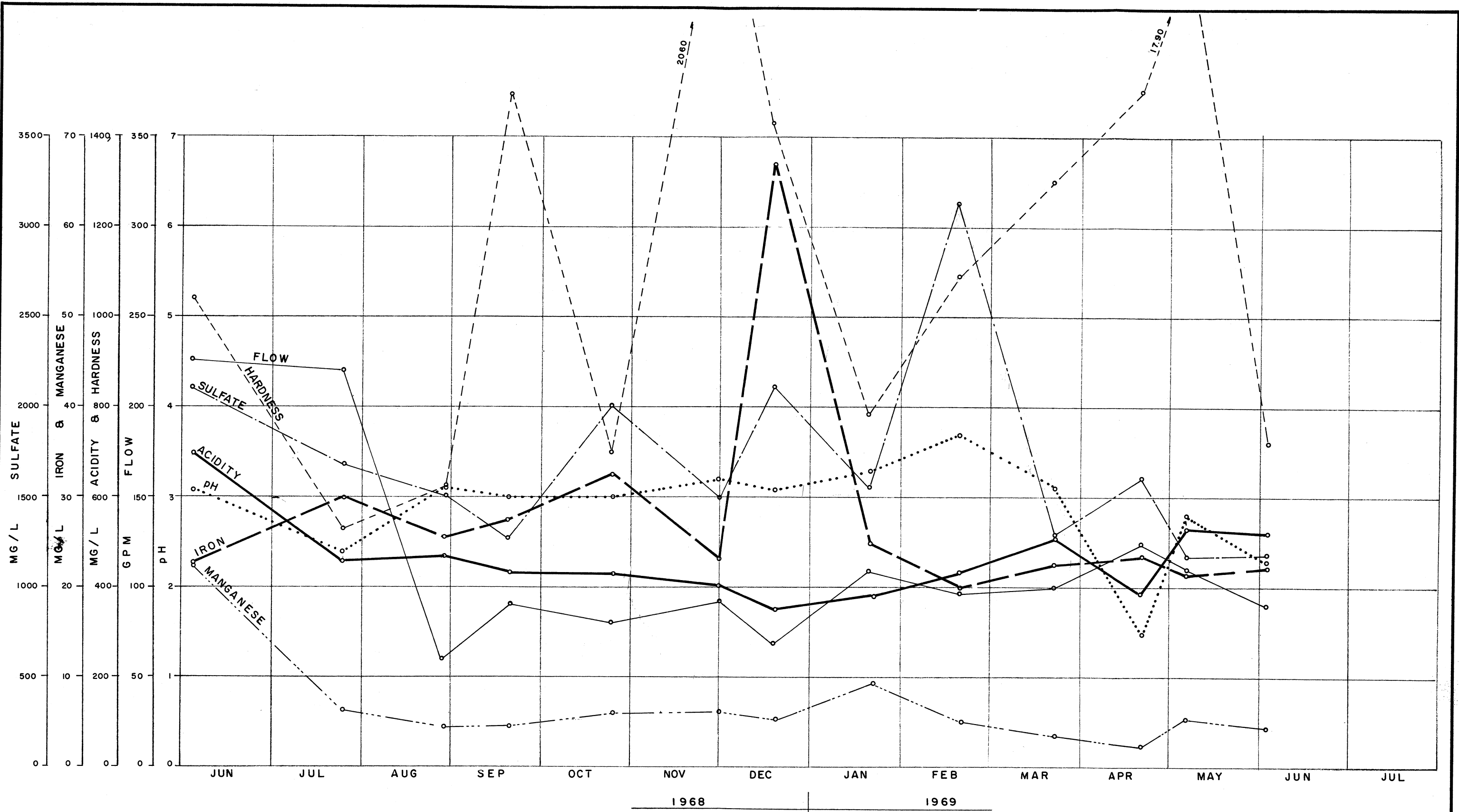
DATE: AUGUST 1969		CHARTIERS CREEK DRAINAGE BASIN ALLEGHENY and WASHINGTON COUNTIES, PENNSYLVANIA	WATER QUALITY SOURCE No. 4810
SCALE:			
DR: AP	CK: MTD	A. C. ACKENHEIL & ASSOCIATES, INC. CONSULTING ENGINEERS PITTSBURGH, PA., CHARLESTON, W. VA. & BALTIMORE, MD.	
DWG. NO. 68077 DII - II			



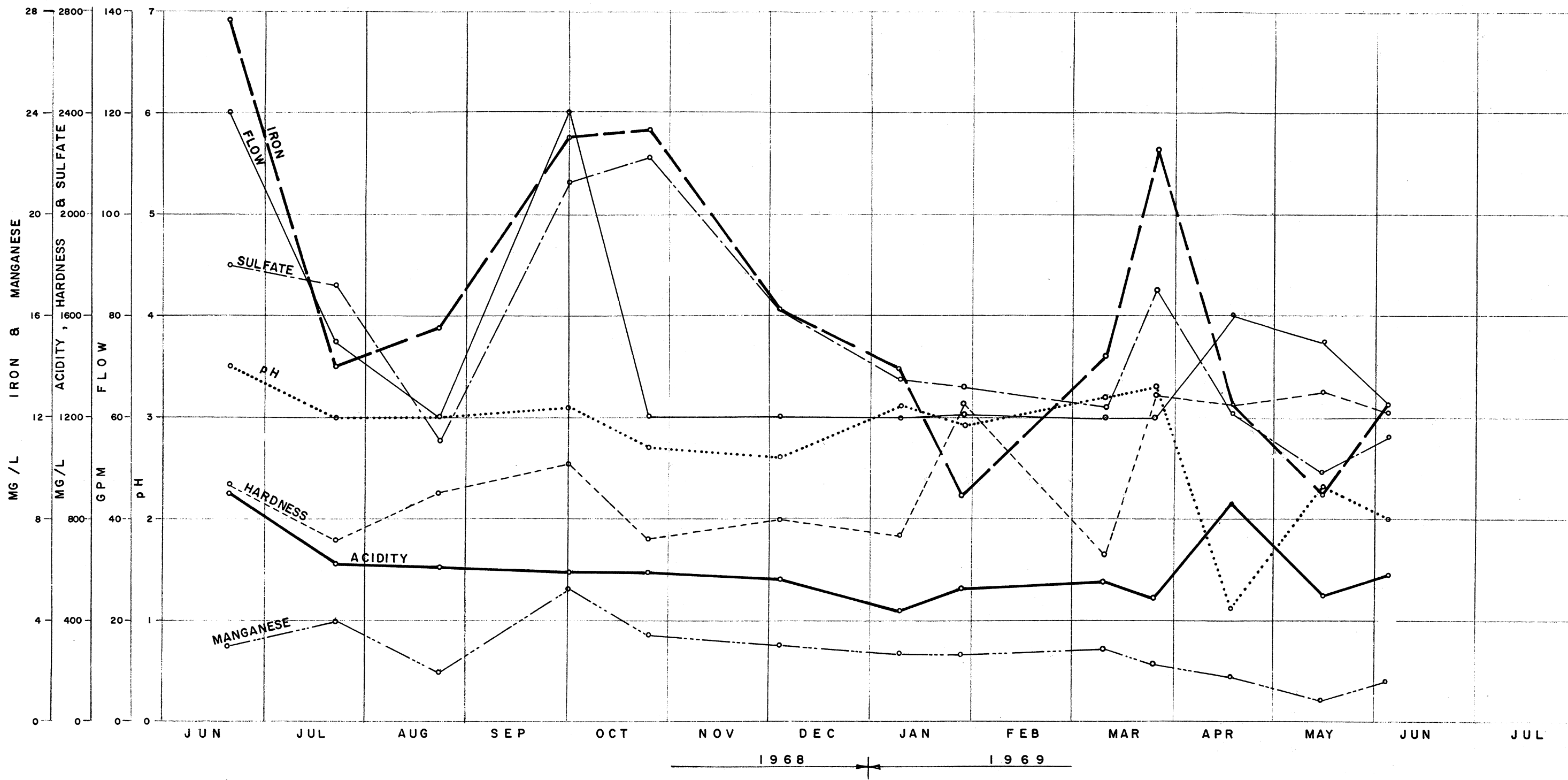
DATE: AUGUST 1969		CHARTIERS CREEK DRAINAGE BASIN ALLEGHENY and WASHINGTON COUNTIES, PENNSYLVANIA		WATER QUALITY SOURCE No. 4055
SCALE:				
DR: AP	CK: MTD	A. C. ACKENHEIL & ASSOCIATES, INC. CONSULTING ENGINEERS PITTSBURGH, PA., CHARLESTON, W. VA. & BALTIMORE, MD.		
DWG. NO. 68077 DII-12				



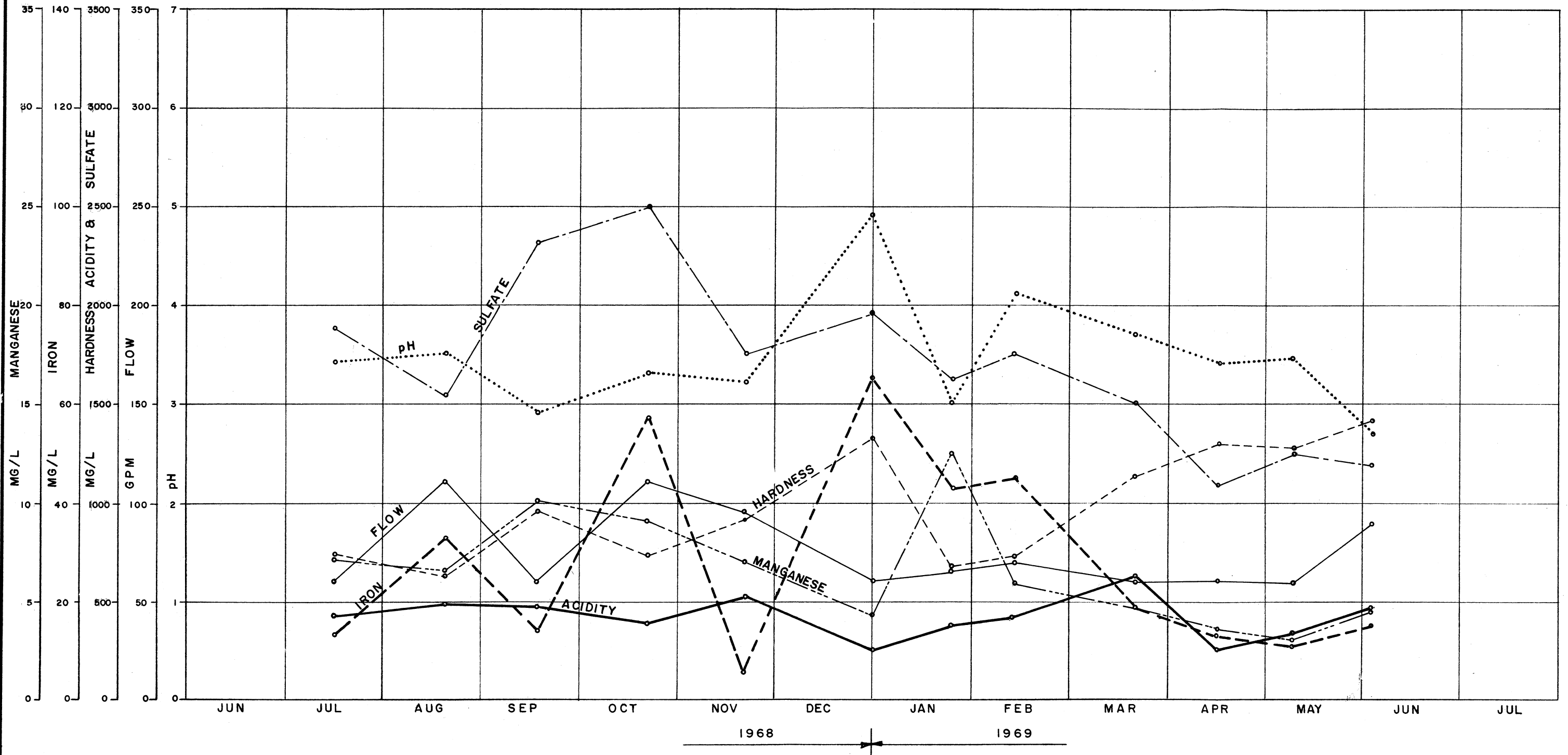
DATE: AUGUST 1969		CHARTIERS CREEK DRAINAGE BASIN ALLEGHENY and WASHINGTON COUNTIES, PENNSYLVANIA		WATER QUALITY SOURCE No 4034
SCALE:				
DR: AP	CK: MTD	A. C. ACKENHEIL & ASSOCIATES, INC. CONSULTING ENGINEERS PITTSBURGH, PA., CHARLESTON, W. VA. & BALTIMORE, MD.		
DWG. NO. 68077 D II-13				



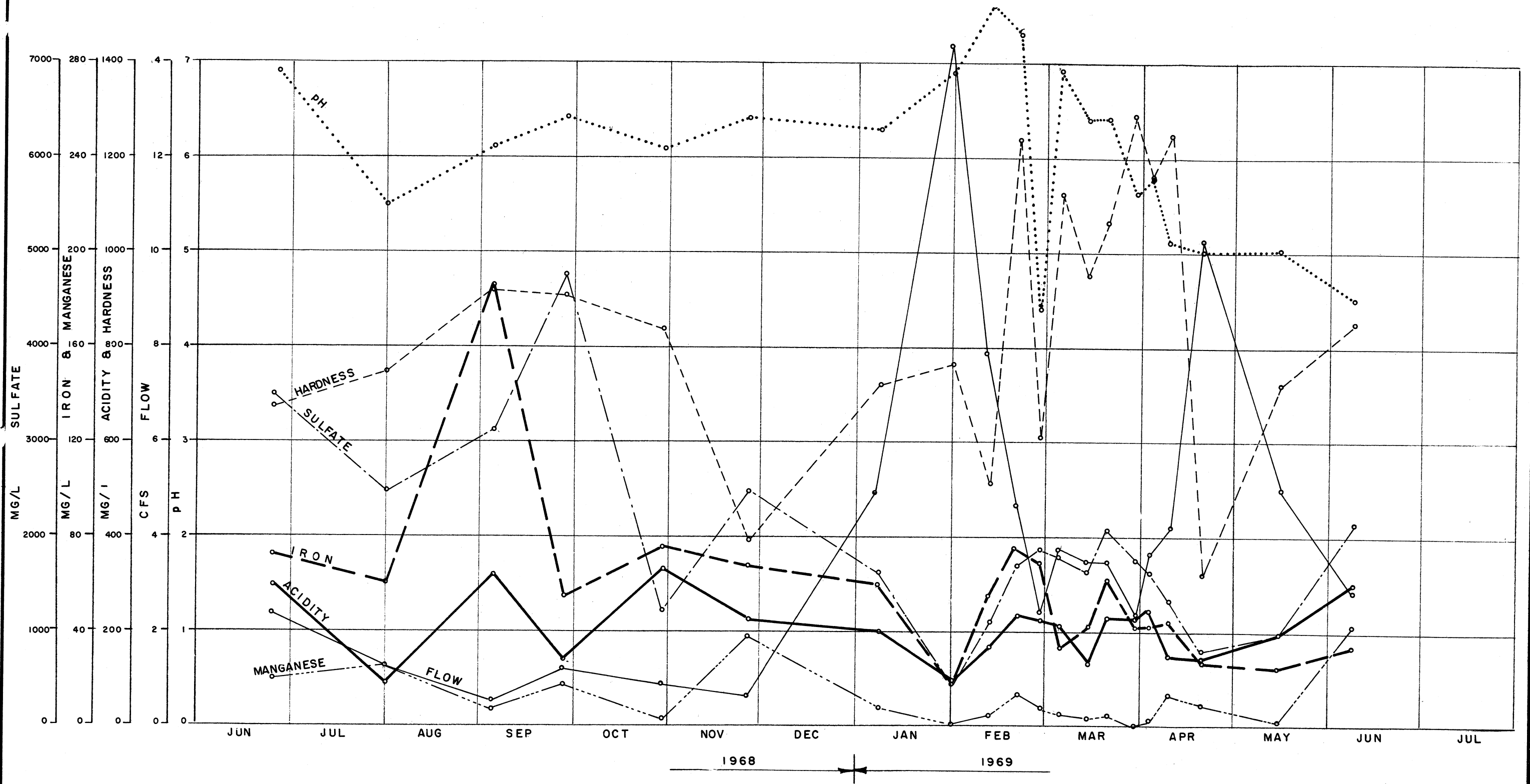
DATE: AUGUST 1969		CHARTIERS CREEK DRAINAGE BASIN ALLEGHENY and WASHINGTON COUNTIES, PENNSYLVANIA		WATER QUALITY SOURCE No. 4834
SCALE:				
DR: AP	CK: MTD	A. C. ACKENHEIL & ASSOCIATES, INC. CONSULTING ENGINEERS PITTSBURGH, PA., CHARLESTON, W. VA. & BALTIMORE, MD.		
DWG. NO. 68077 DII-14				



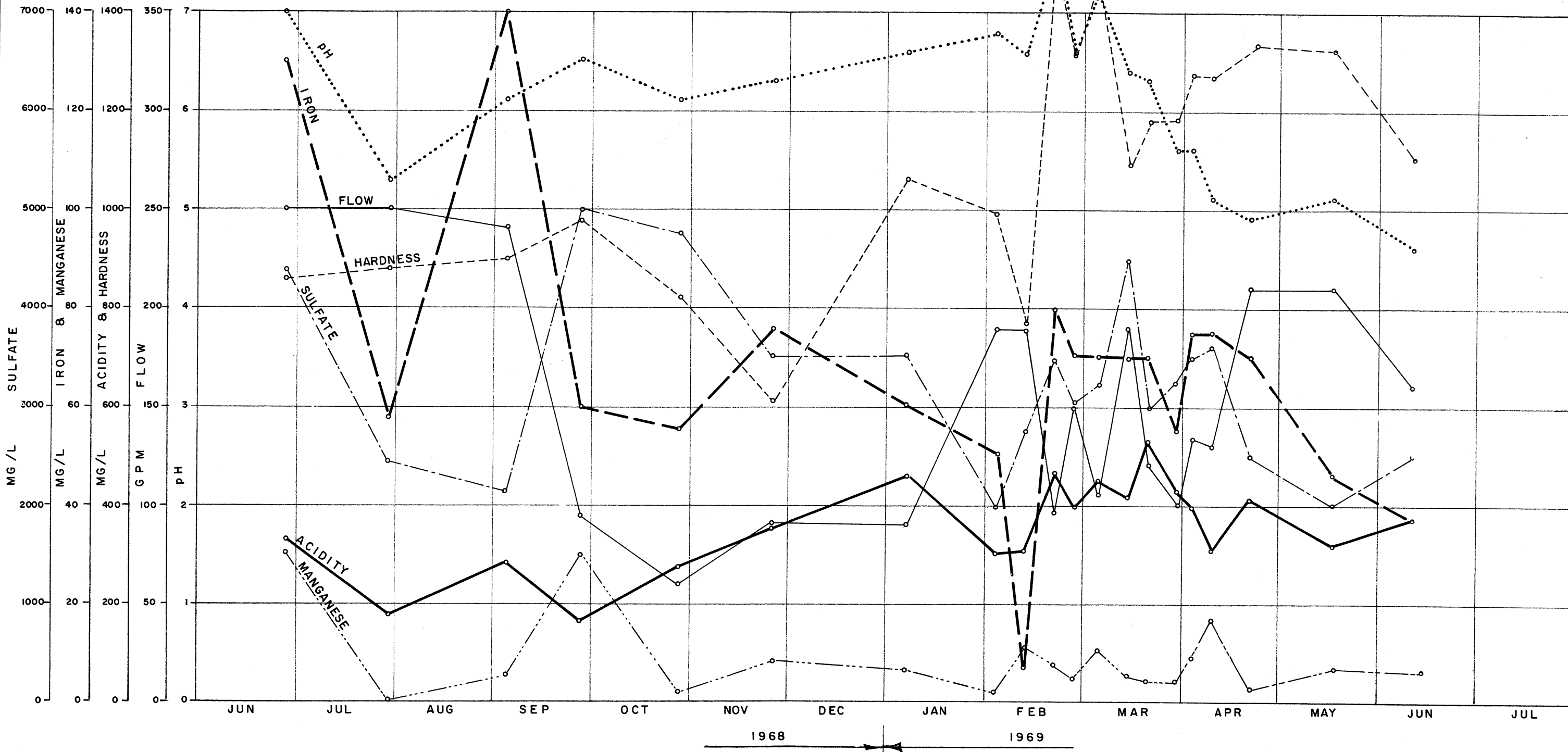
DATE: AUGUST 1969		CHARTIERS CREEK DRAINAGE BASIN ALLEGHENY and WASHINGTON COUNTIES, PENNSYLVANIA		WATER QUALITY SOURCE No. 6022
SCALE:				
DR: AP	CK: MTD	A. C. ACKENHEIL & ASSOCIATES, INC. CONSULTING ENGINEERS PITTSBURGH, PA., CHARLESTON, W. VA. & BALTIMORE, MD.		
DWG. NO. 68077 DII-15				



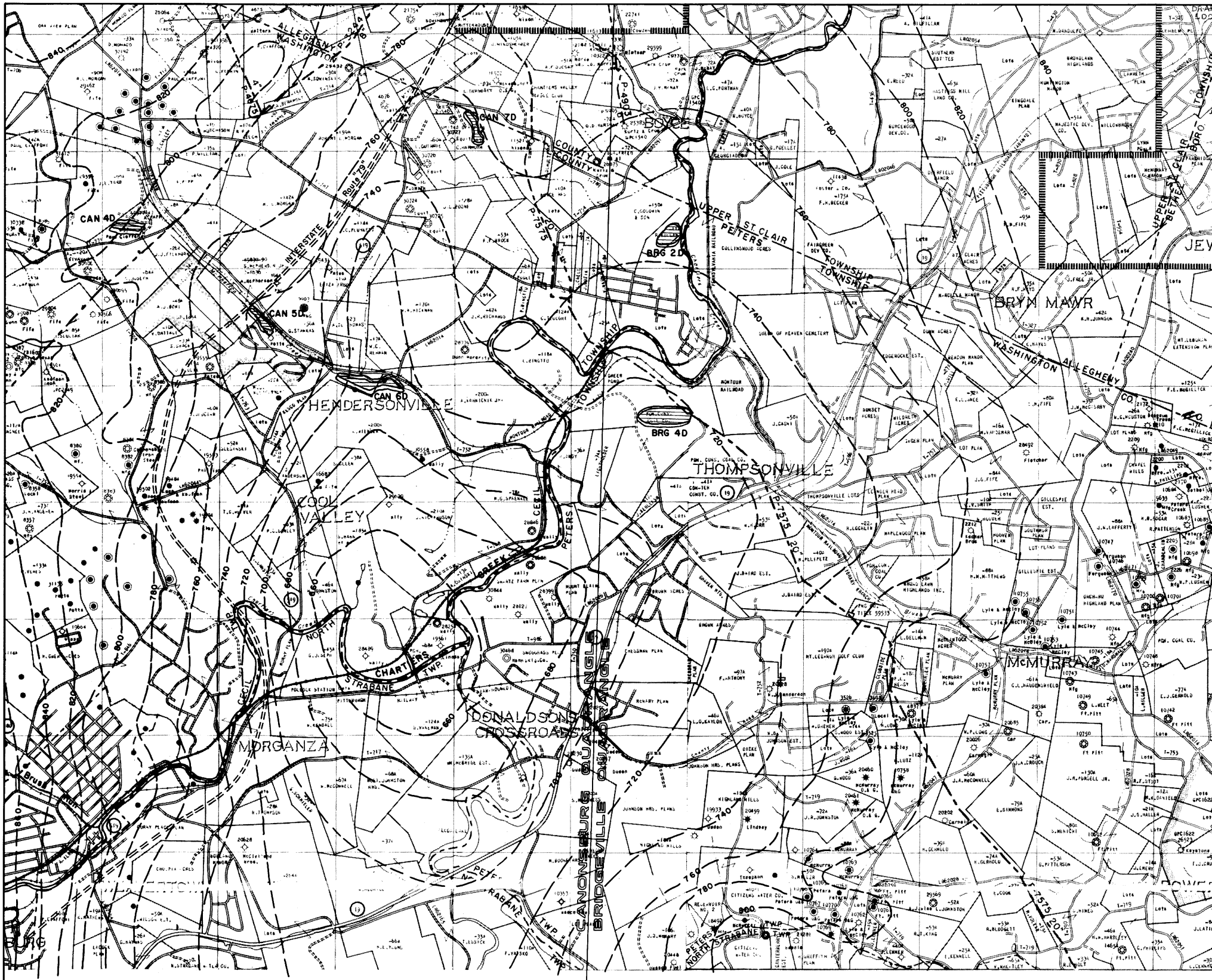
DATE: AUGUST 1969		CHARTIERS CREEK DRAINAGE BASIN ALLEGHENY and WASHINGTON COUNTIES, PENNSYLVANIA	WATER QUALITY SOURCE No. 4153
SCALE:			
DR: AP	CK: MTD	A. C. ACKENHEIL & ASSOCIATES, INC. CONSULTING ENGINEERS PITTSBURGH, PA., CHARLESTON, W. VA. & BALTIMORE, MD.	
DWG. NO. 68077 D II -16			



DATE: AUGUST 1969		CHARTIERS CREEK DRAINAGE BASIN ALLEGHENY and WASHINGTON COUNTIES, PENNSYLVANIA		WATER QUALITY SOURCE No 6034
SCALE:				
DR: AP	CK: MTD	A. C. ACKENHEIL & ASSOCIATES, INC. CONSULTING ENGINEERS PITTSBURGH, PA., CHARLESTON, W. VA. & BALTIMORE, MD.		
DWG. NO. 68077 DII-17				



DATE: AUGUST 1969		CHARTIERS CREEK DRAINAGE BASIN ALLEGHENY and WASHINGTON COUNTIES, PENNSYLVANIA		WATER QUALITY SOURCE No. 6035
SCALE:				
DR: AP	CK: MTD	A. C. ACKENHEIL & ASSOCIATES, INC. CONSULTING ENGINEERS PITTSBURGH, PA., CHARLESTON, W. VA. & BALTIMORE, MD.		
DWG. NO. 68077 D II-18				



LEGEND

1	2
3	4
5	6

ALLEGHENY CO.
WASHINGTON CO.

- MAJOR SOURCE OF POLLUTION
- SURFACE DRAINAGE LIMITS OF CHARTIERS CREEK BASIN
- OUTCROP OF PITTSBURGH COAL SEAM
- 800 STRUCTURE CONTOURS AT BASE OF PITTSBURGH COAL SEAM
- Y MINE ENTRANCE
- MINE SHAFT
- MINE DUMP
- LOCATION OF EXPOSED STRIP MINE HIGHWALL
- ACTIVE STRIP MINE
- RECLAIMED STRIP MINE
- AREAS WHERE COAL IS NOT PRESENT
- UNRECLAIMED STRIP MINE
- STRIP MINE WHERE SLOPE IS TOWARD HIGHWALL
- STRIP MINE WHERE SLOPE IS AWAY FROM HIGHWALL

STRIP MINES & MINE DUMPS ARE IDENTIFIED BY NUMBERS WITHIN THE FOLLOWING TOPOGRAPHIC QUADRANGLES:

CLN	Clinton	MID	Midway
OAK	Oakdale	CAN	Canonsburg
PGW	Pittsburgh West	BRG	Bridgeville

- Oil Wells
- ⊕ Gas Wells
- ◇ Dry Hole

DEPARTMENT OF MINES AND MINERAL INDUSTRIES
**CHARTIERS CREEK
 MINE DRAINAGE POLLUTION
 ABATEMENT PROJECT**
 ALLEGHENY & WASHINGTON COUNTIES, PENNSYLVANIA
 PROJECT NO SL 102

INVENTORY MAP

0 1000 2000 2640 3000
 SCALE IN FEET

September 1969

A. C. ACKENHEIL and ASSOCIATES, INC.
 CONSULTING ENGINEERS
 PITTSBURGH, PA. - CHARLESTON, W.VA. - BALTIMORE, MD

