

ACID MINE DRAINAGE POLLUTION
SOURCE AREA MAPS

INDEX

	<u>Sheet</u>
Index and Legend Sheet	1
Source Areas by Numerical Order	
Swamp Creek Areas	
Area 1	A-1 of 14
Area 2	A-1 of 14
Area 3	A-1 & A-4 of 14
Area 4	A-1 & A-4 of 14
Area 5	A-4 of 14
Area 6	A-4 of 14
Area 7	A-4 & A-8 of 14
Area 8	A-7 & A-8 of 14
Area 9	A-7 & A-8 of 14
Area 10	A-7 & A-8 of 14
Area 11	A-8, A-10 & A-11 of 14
Area 12	A-11 & A-14 of 14
Area 13	A-2 of 14
Area 14	A-5 & A-9 of 14
Area 15	A-5 of 14
Area 16	A-5 of 14
Area 17	A-9 of 14
Area 18	A-3 of 14
Area 19	A-3 of 14
Area 20	A-3 of 14
Area 21	A-8 of 14
Area 22	A-7 & A-8 of 14
Area 23	A-7 of 14
Area 24	A-3, A-7 & A-10 of 14
Area 25	A-13 & A-14 of 14
Area 26	A-1 of 14

Sheet .

Area 27

A-2 of 14

Area 28

A-1 & A-4 of 14

Area 29

A-8 of 14

Area 30

A-10 of 14

Area 31

A-5 & A-9 of 14

Area 32

A-5 of 14

Area 33

A-3 of 14

Area 34

A-3 of 14

Gum Boot Run

Area 36

B-1 of 8

Area 37

B-1 of 8

Area 38

B-1 of 8

Area 39

B-1 of 8

Area 40

B-1 & B-2 of 8

Area 41

B-2 of 8

Area 42A

B-5 of 8

Area 42B

B-5 of 8

Area 42C

B-5 of 8

Area 42D

B-5 of 8

Area 43A

B-6 of 8

Area 43B

B-6 of 8

Area 43C

B-6 of 8

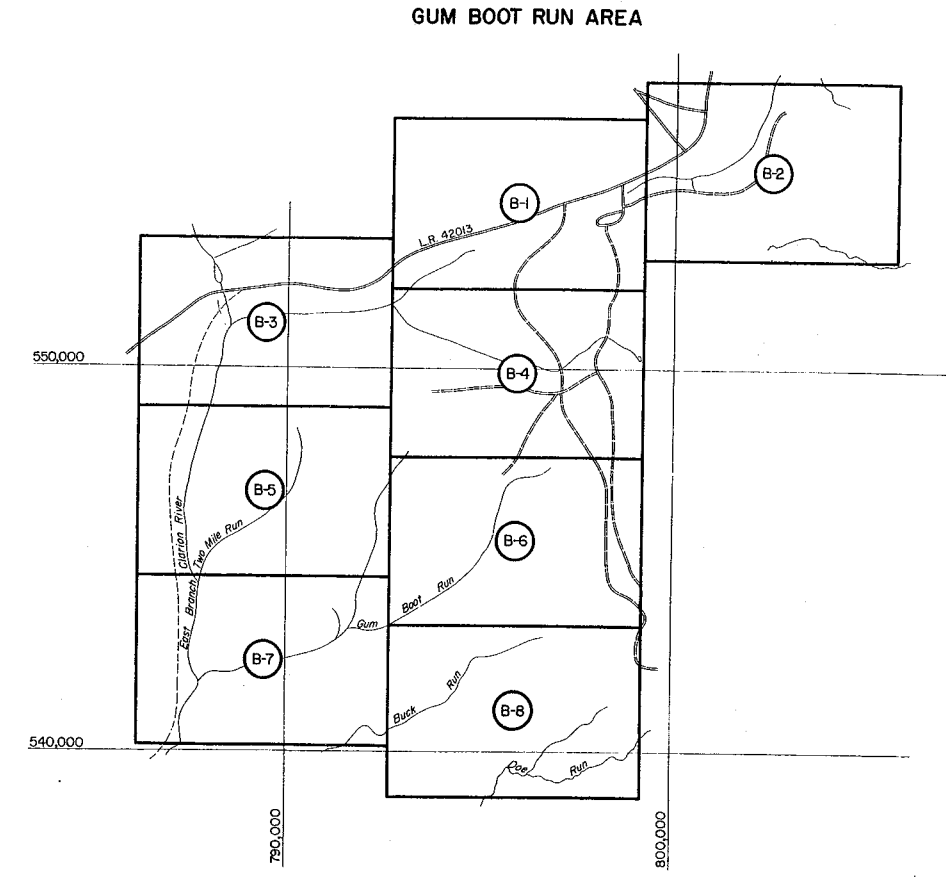
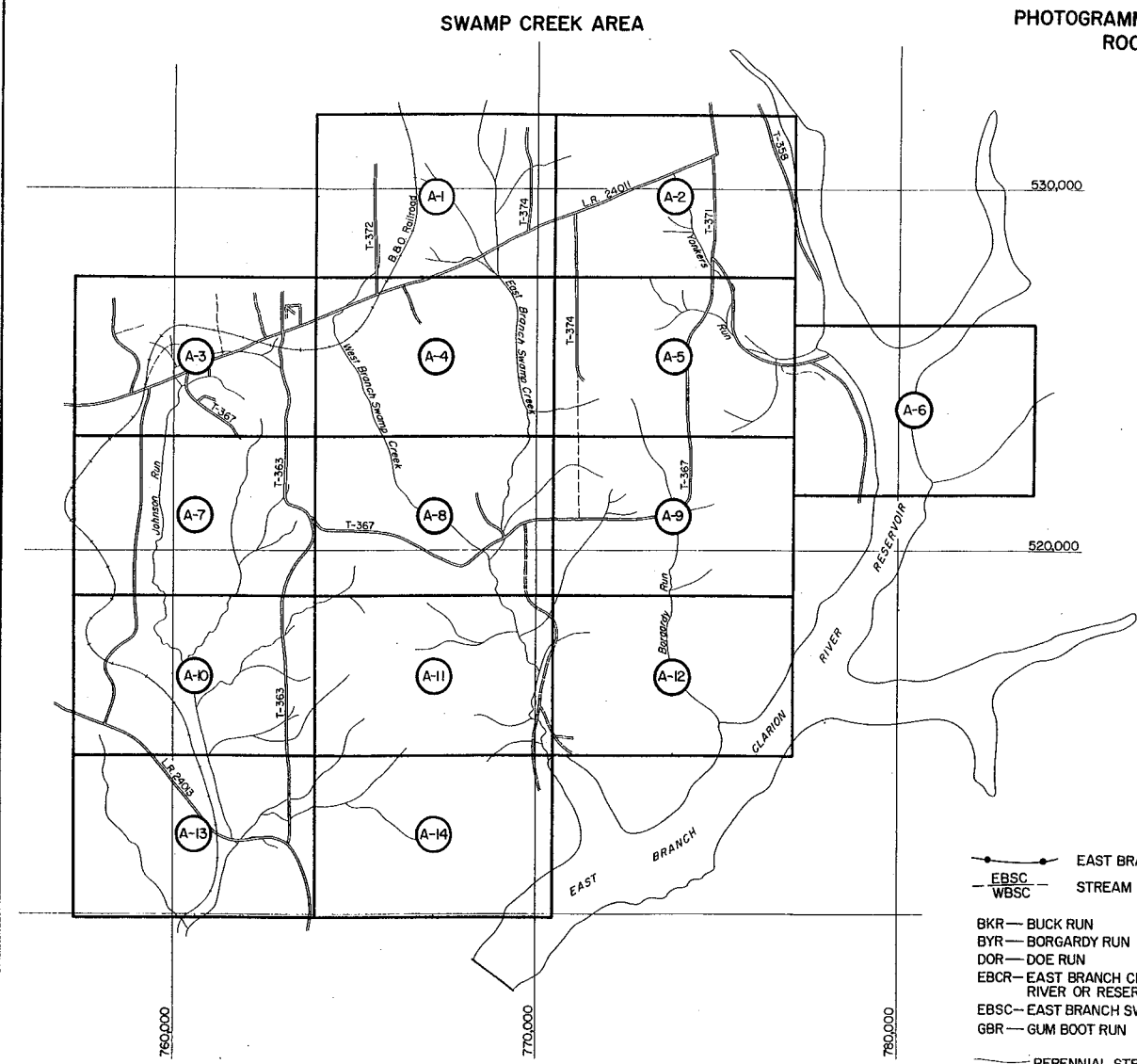
Area 43D

B-6 of 8

INDEX and LEGEND SHEET		1
SWAMP CREEK AREA	SHEETS A-1 to A-14	14
GUM BOOT RUN AREA	SHEETS B-1 to B-8	8
TOTAL SHEETS		23

COMMONWEALTH OF PENNSYLVANIA
DEPARTMENT OF MINES & MINERAL INDUSTRIES
OPERATION SCARLIFT
PROJECT SL-108 EAST BRANCH CLARION RIVER

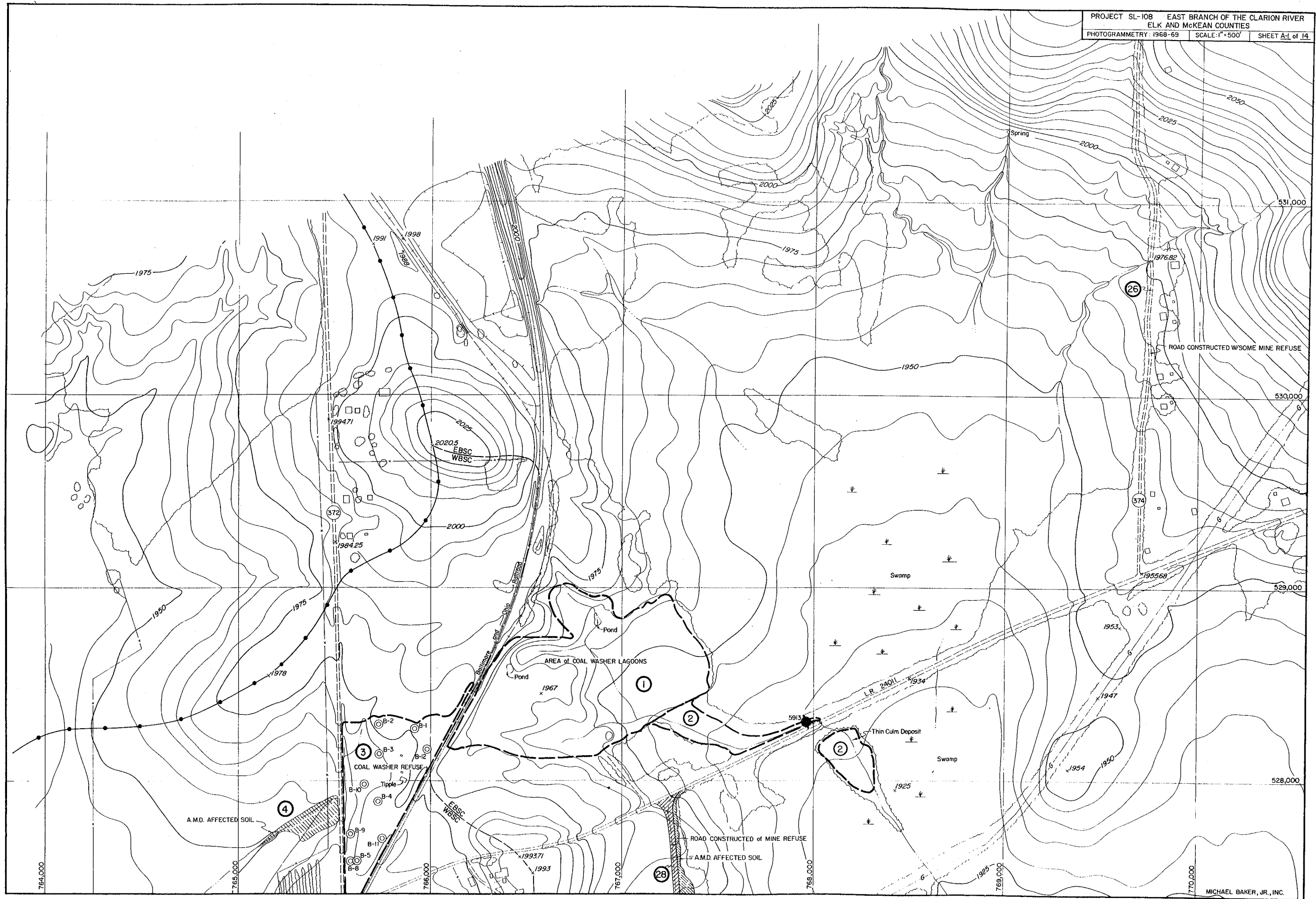
ELK & McKEAN COUNTIES
INDEX OF MAPS ON A SCALE OF 1 INCH = 500 FEET
PHOTOGRAMMETRY BY MICHAEL BAKER, JR., INC.
ROCHESTER, PENNSYLVANIA
FLOWN 1968-69

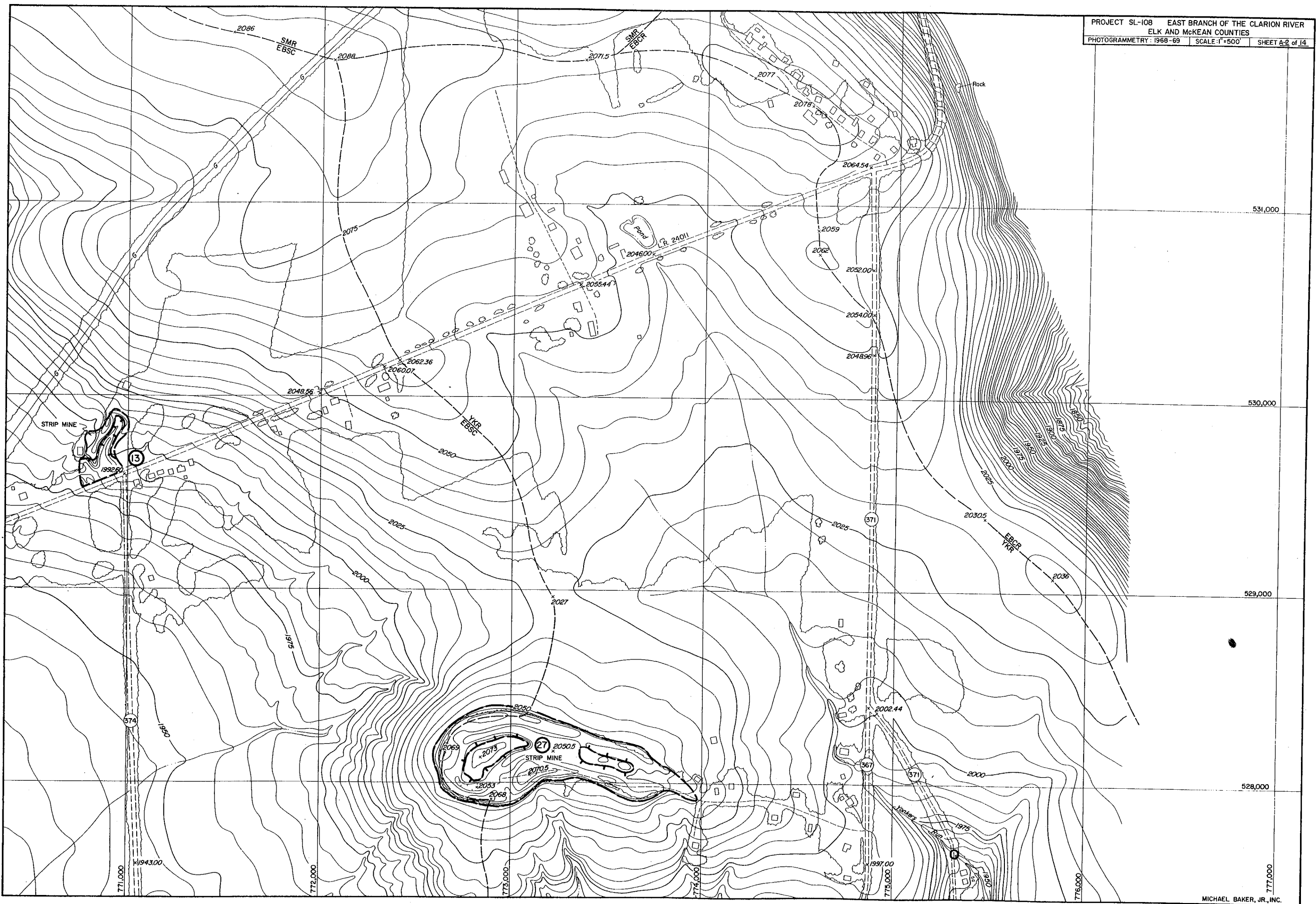


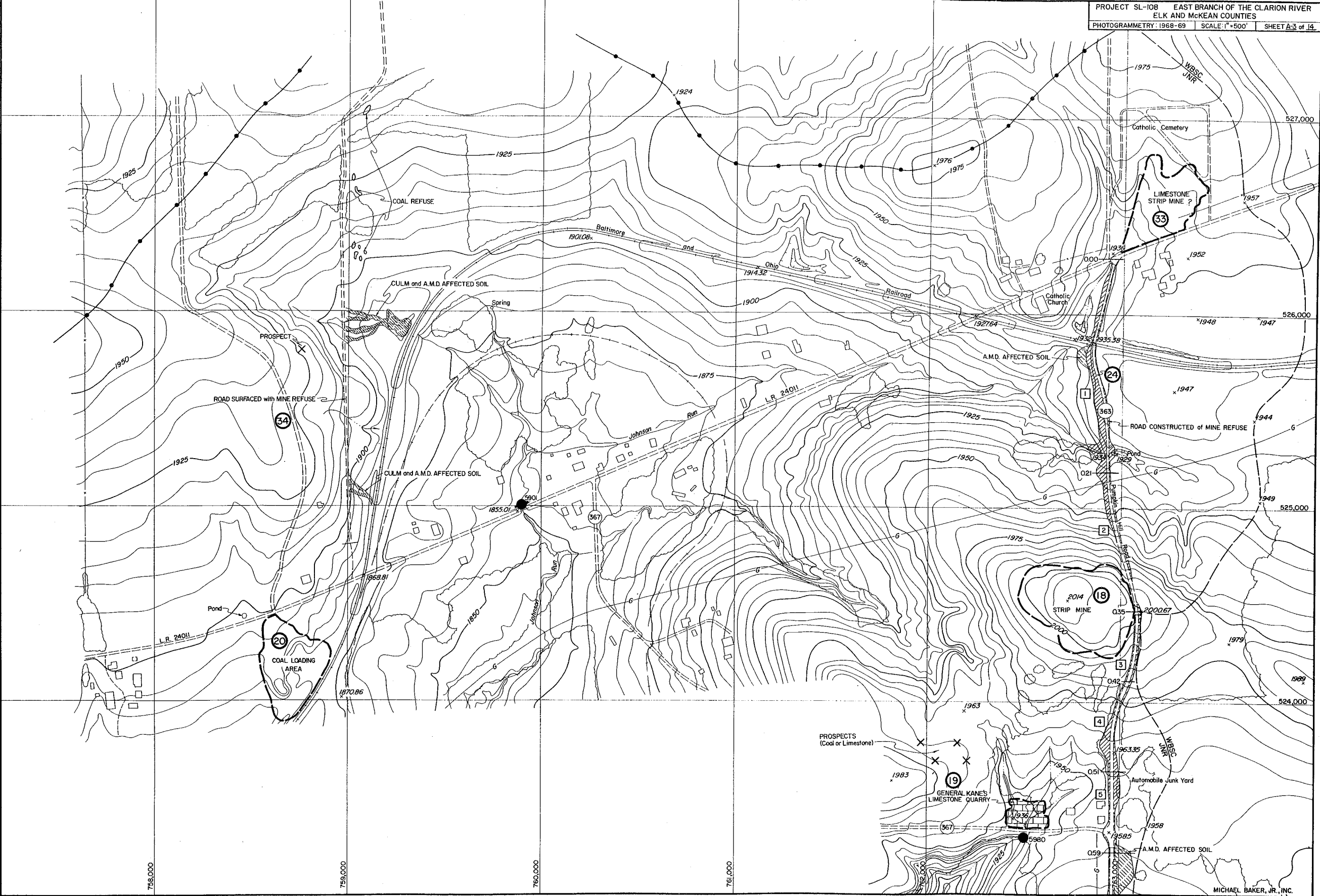
- EAST BRANCH CLARION RIVER BASIN DRAINAGE DIVIDE
- EBSC — STREAM DRAINAGE DIVIDE
- WBSC
- BKR — BUCK RUN
- BYR — BORGARDY RUN
- DOR — DOE RUN
- EBCR — EAST BRANCH CLARION RIVER OR RESERVOIR
- EBSC — EAST BRANCH SWAMP CREEK
- GBR — GUM BOOT RUN
- JNR — JOHNSON RUN
- MTR — MARTIN RUN
- SMR — SEVENMILE RUN
- TMR — TWOMILE RUN
- WBSC — WEST BRANCH SWAMP CREEK
- YKR — YONKERS RUN
- PERENNIAL STREAMS —
- INTERMITTENT STREAMS —
- POND —
- SPRING —
- SEEPAGE —
- 5970 WATER QUALITY SAMPLING STATION—FWQA STORET NUMBER
- 5933 WATER QUALITY SAMPLING STATION AT WEIR LOCATION
- 5941 WATER QUALITY SAMPLING STATION AT MINE SEAL OUTLET
- TEMPORARY WATER QUALITY SAMPLING LOCATION

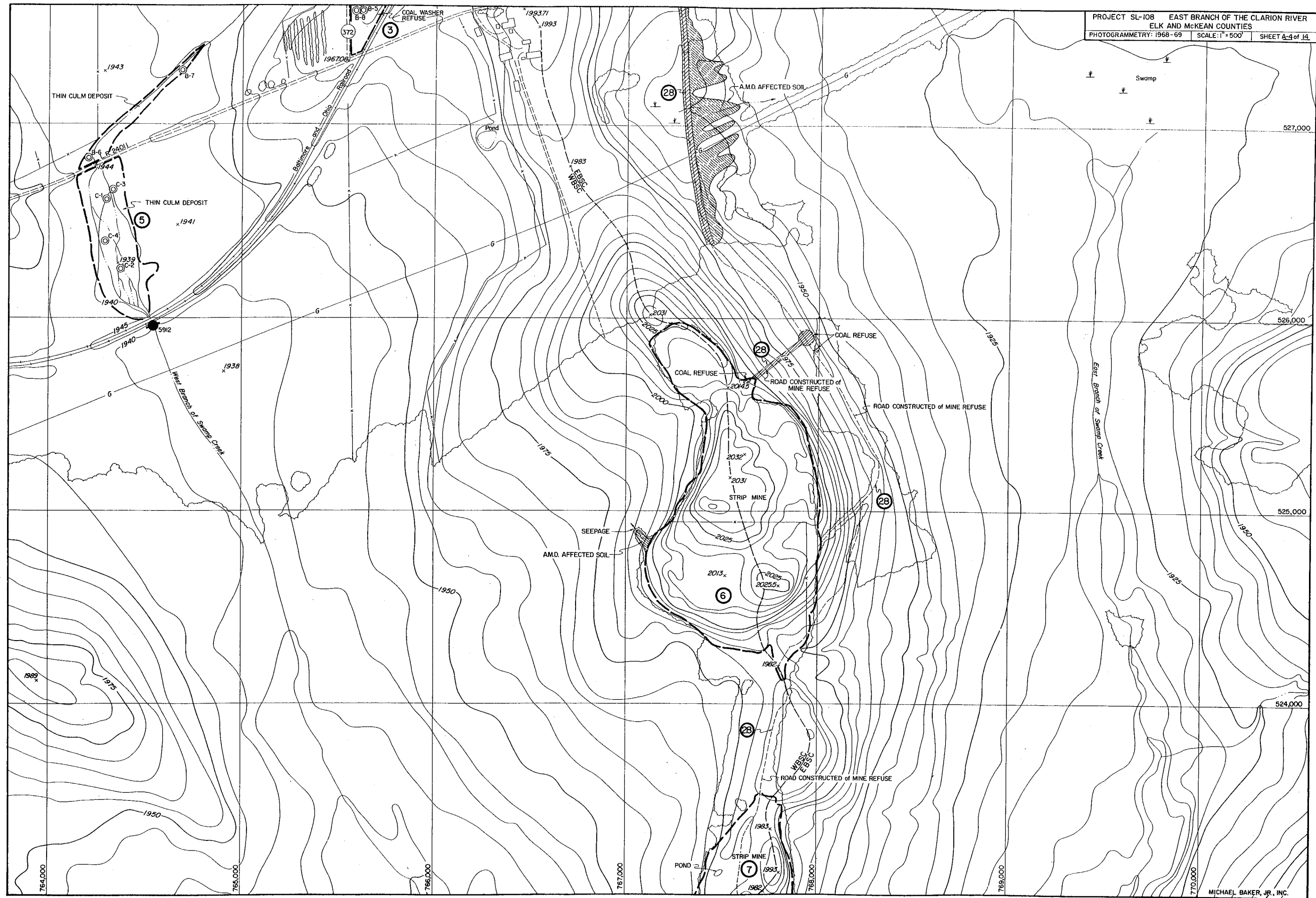
ABBREVIATIONS AND SYMBOLS

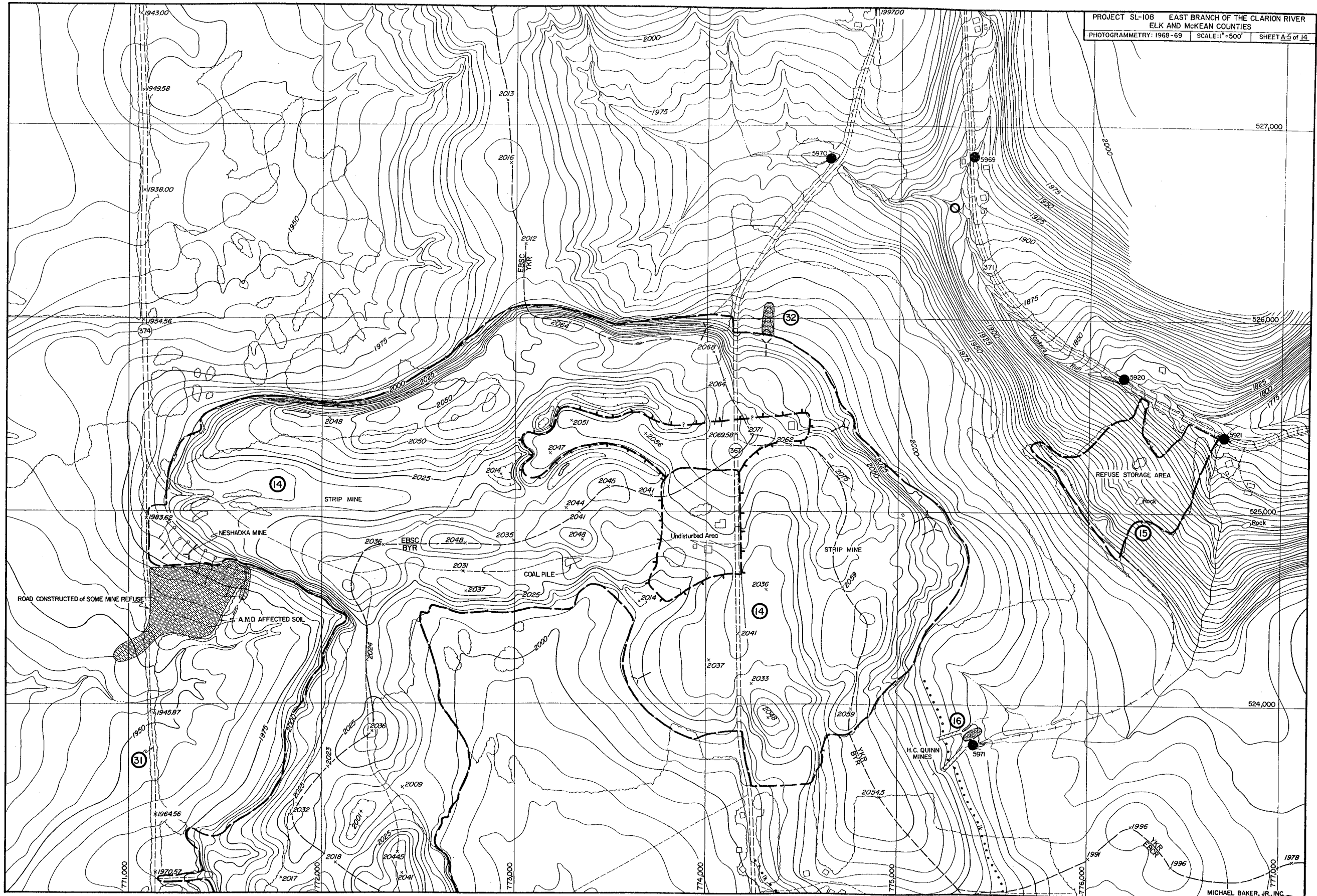
- (24) or (42) NUMERICAL DESIGNATION OF AREAS AFFECTED BY SURFACE AND UNDERGROUND MINING OPERATIONS
- LIMIT OF SURFACE AREA AFFECTED BY COAL STRIP-MINING, WASHING PLANT, STORAGE OR HAULING OPERATIONS
- HIGHWALL OF STRIP-MINE
- OLD LIMESTONE QUARRY
- COAL MINE REFUSE BANK (DRIFT MINE)
- MINE REFUSE USED IN ROAD CONSTRUCTION
- YELLOWBOY DEPOSIT
- SOIL AFFECTED BY ACID MINE DRAINAGE
- MINE PORTAL AND OPEN CUT
- LOCATION OF MINE ENTRY OBLITERATED BY STRIP-MINING OR WEATHERING
- × PROSPECT (COAL OR LIMESTONE)
- MINE SEAL OUTLET
- PROBABLE LIMIT OF COAL OUTCROP
 - lk LOWER KITTANNING COAL
 - cl CLARION COAL
 - um UPPER MERCER
- ⊙ B-6 PORTABLE POWER AUGER BORING
- ▲ DEPRESSION (CAVING OR AIRSHAFT?)
- PUMPKIN HILL ROAD (L.R. 363)
- SECTION OF ROADWAY
- 0.51 — MILEAGE BEGINNING AT L.R. 24011

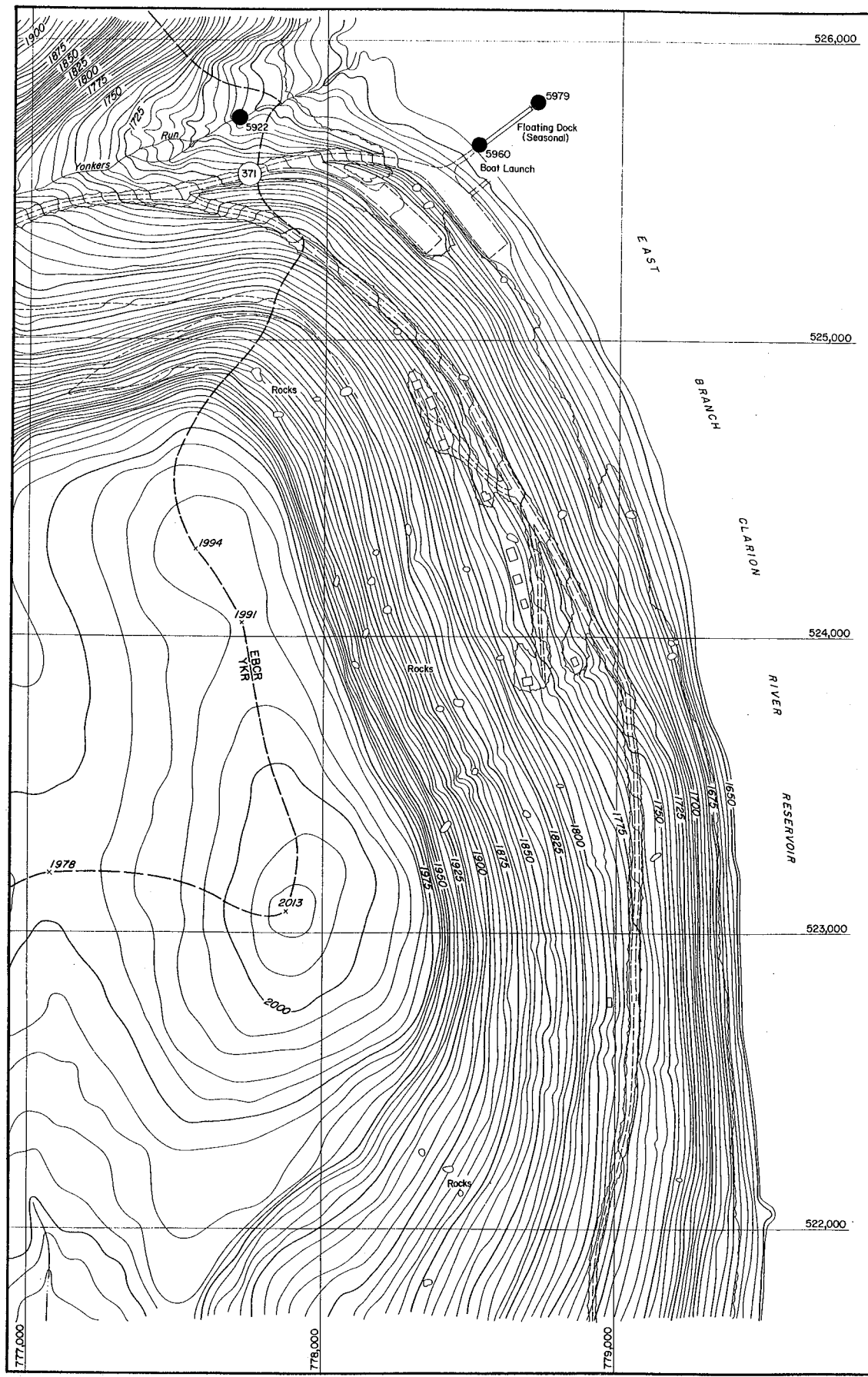


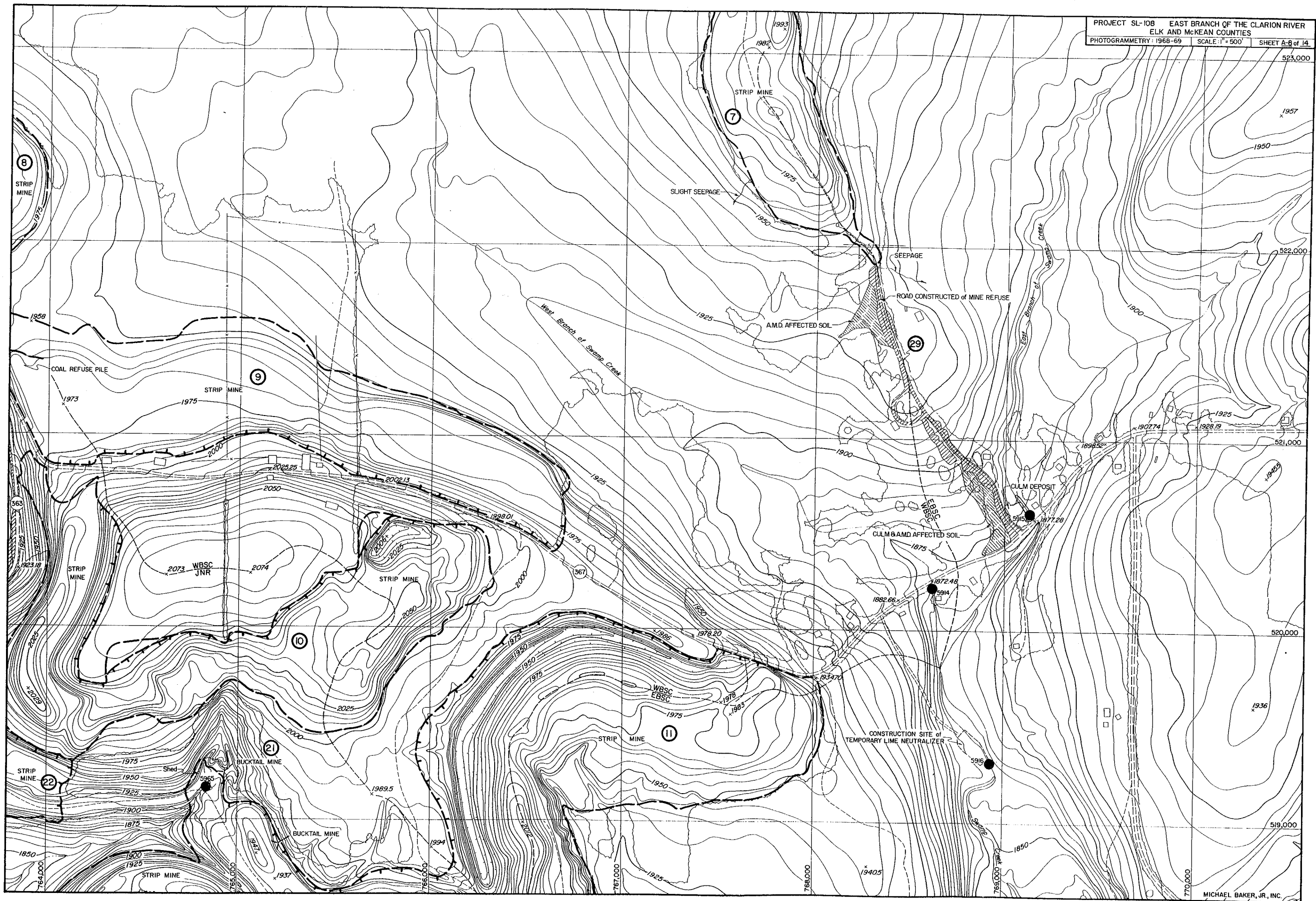


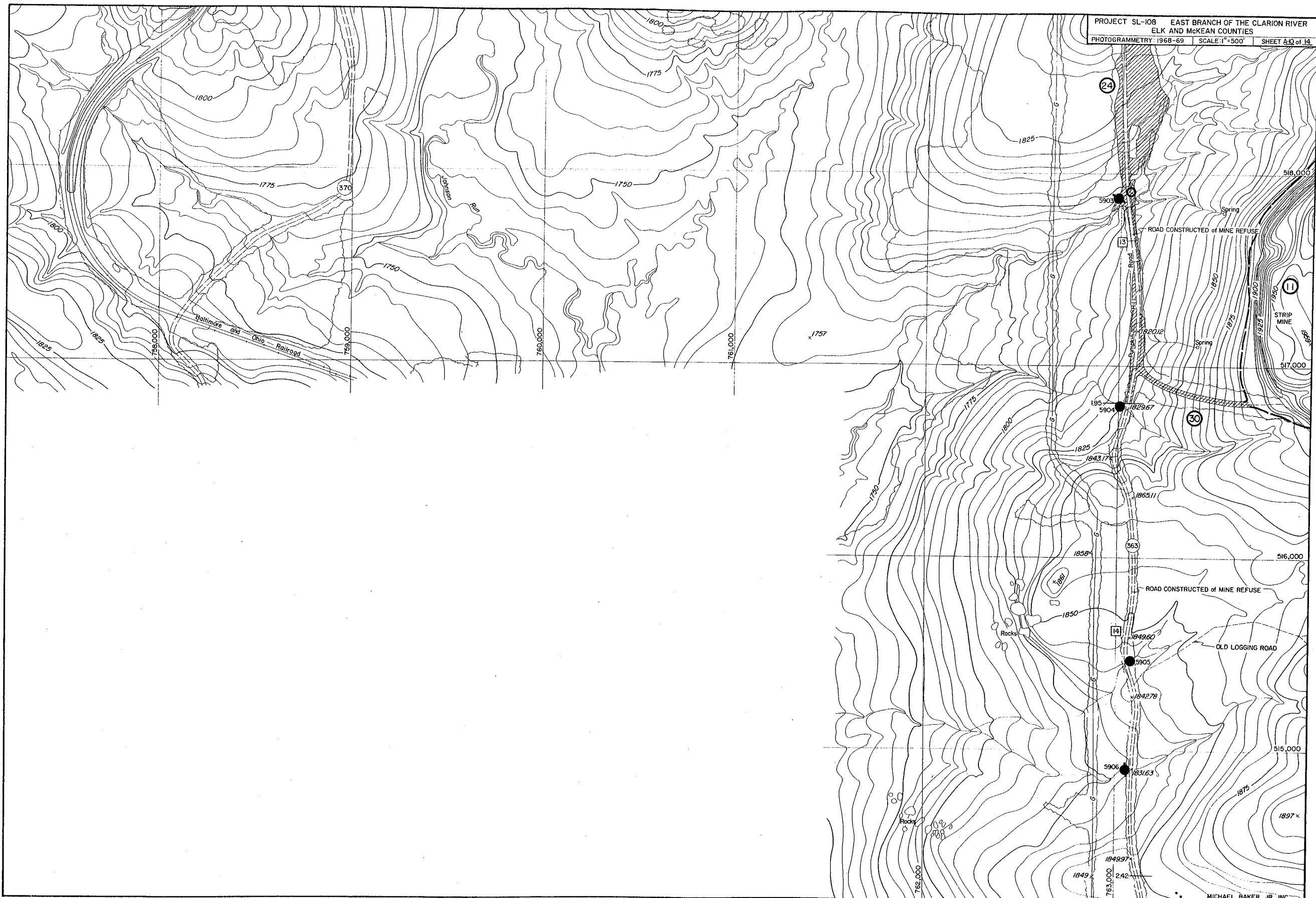


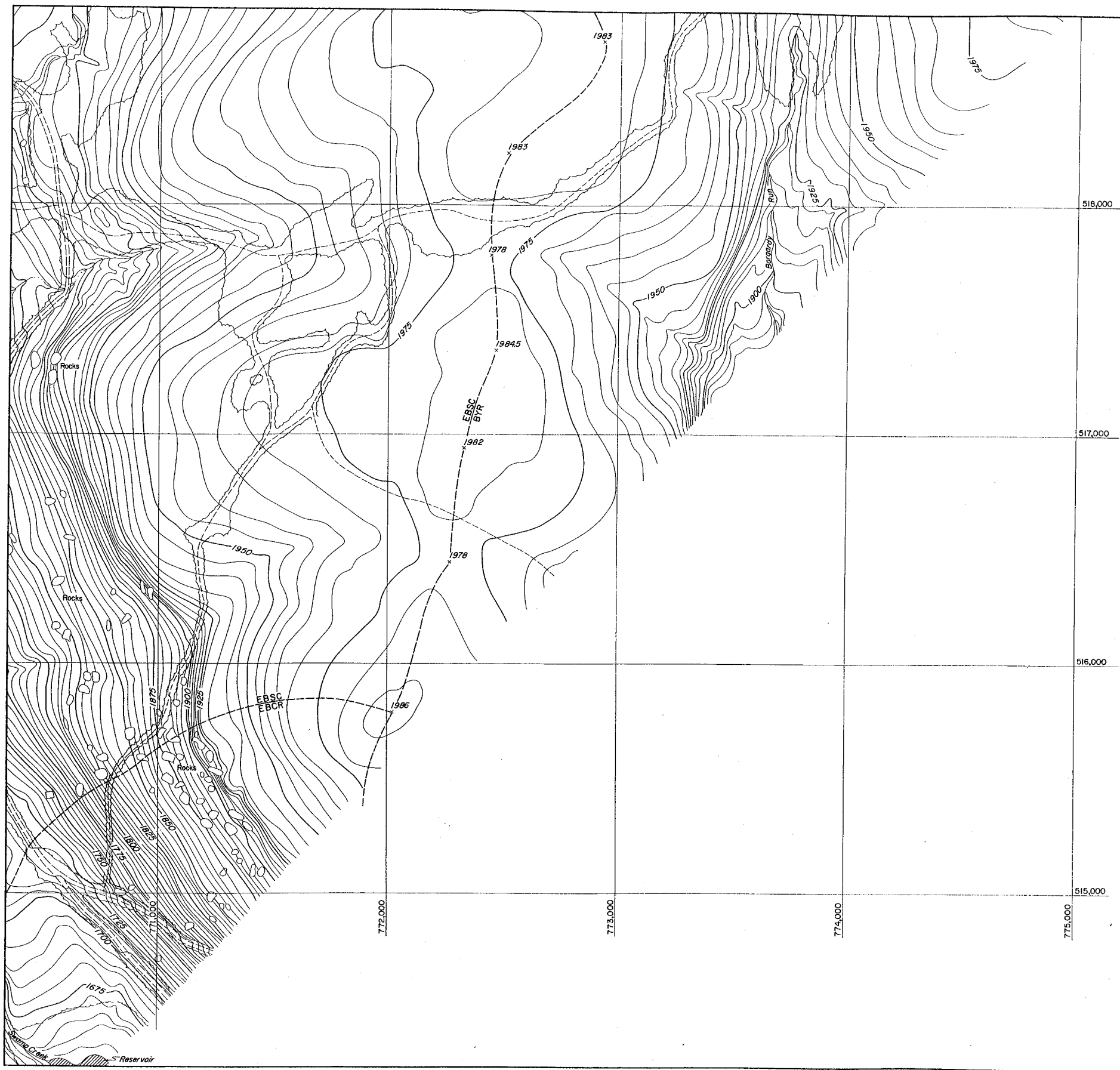




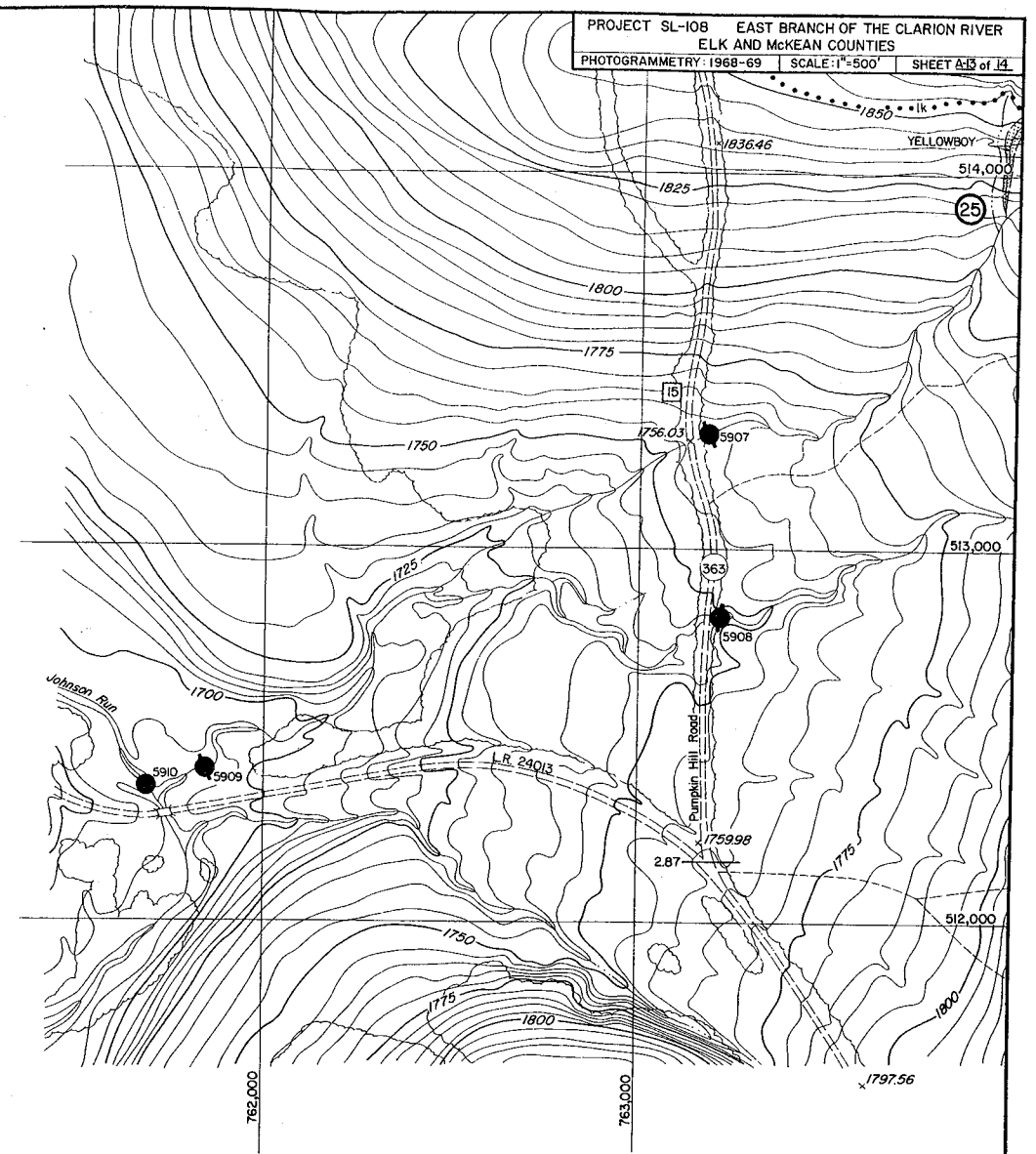


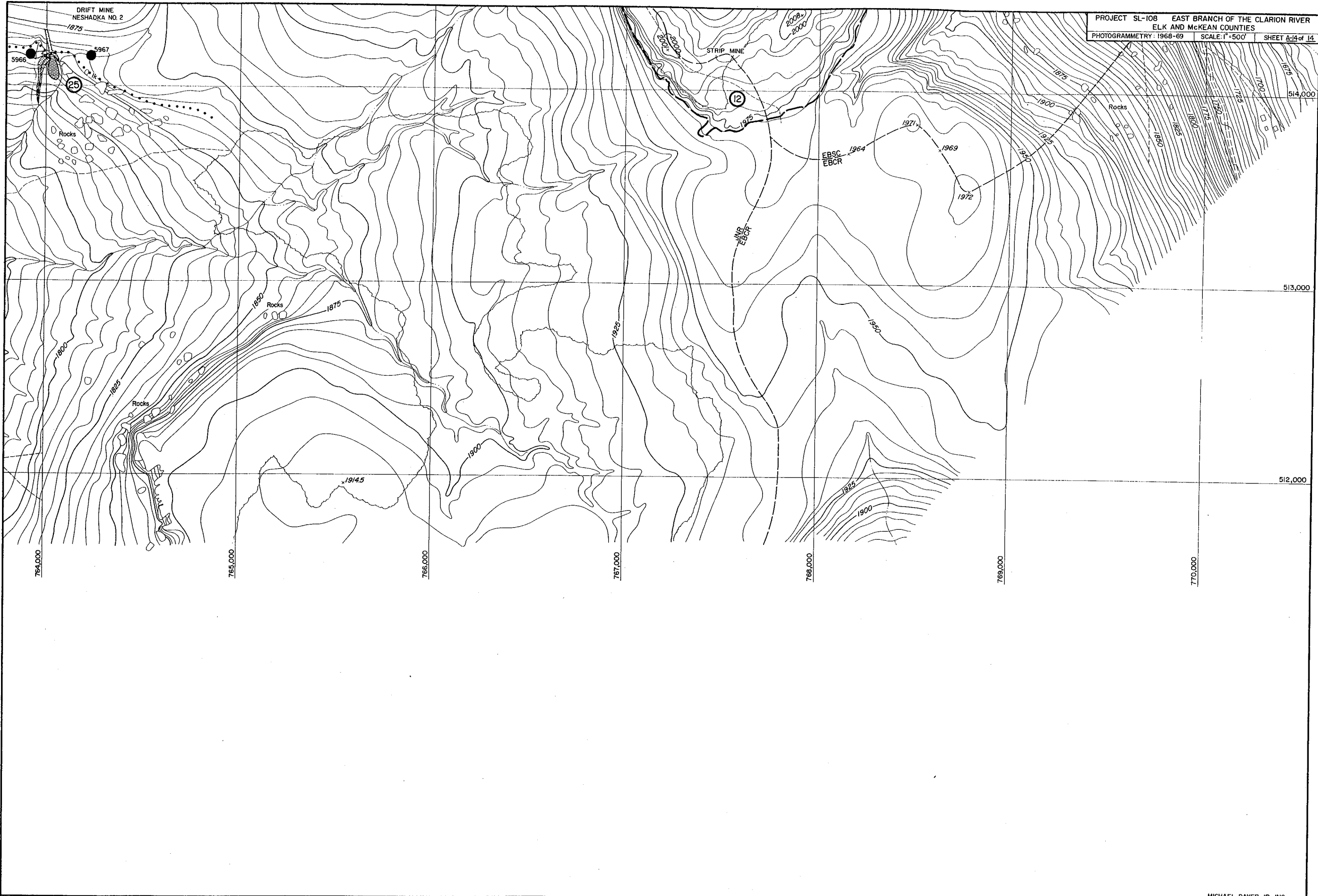


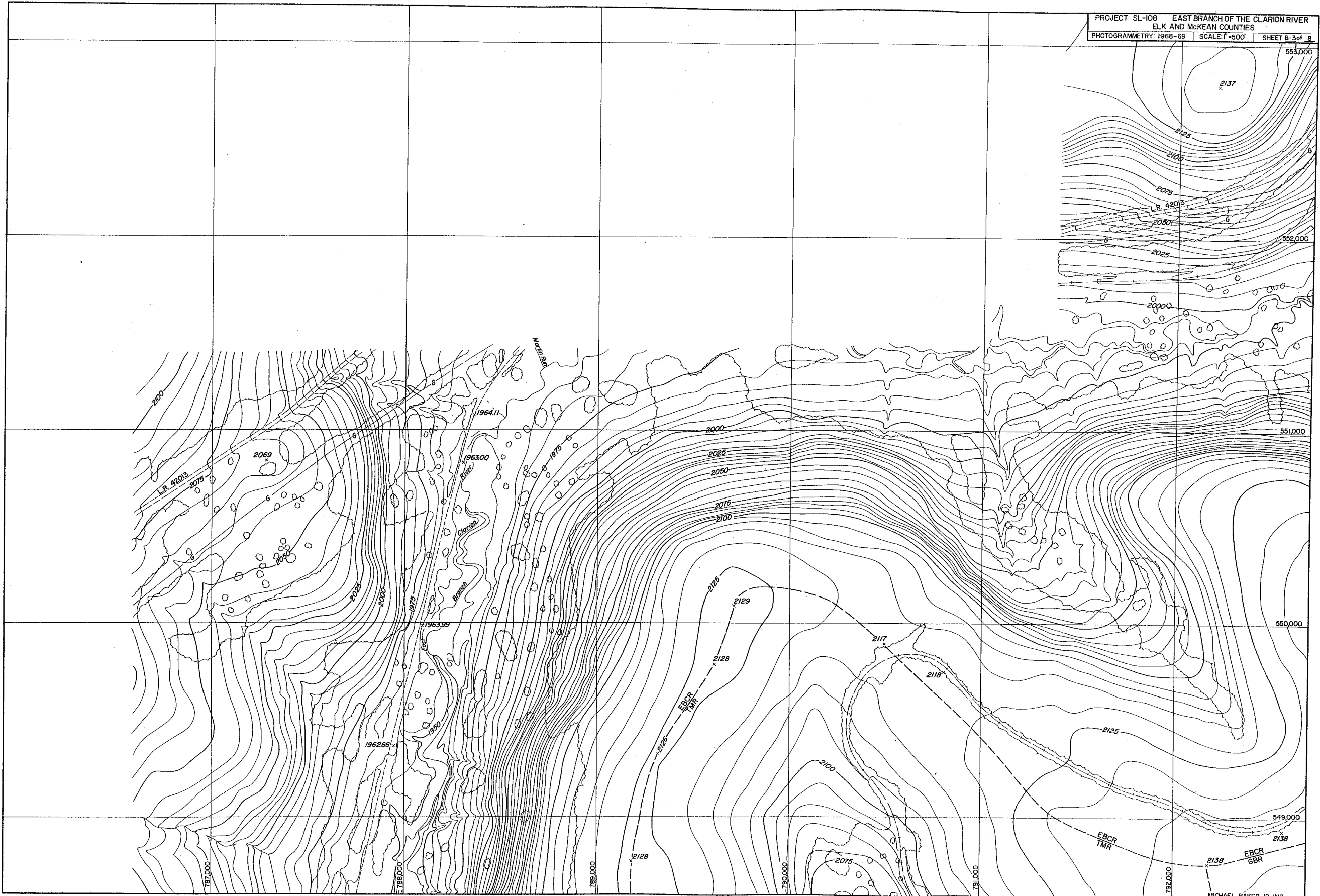


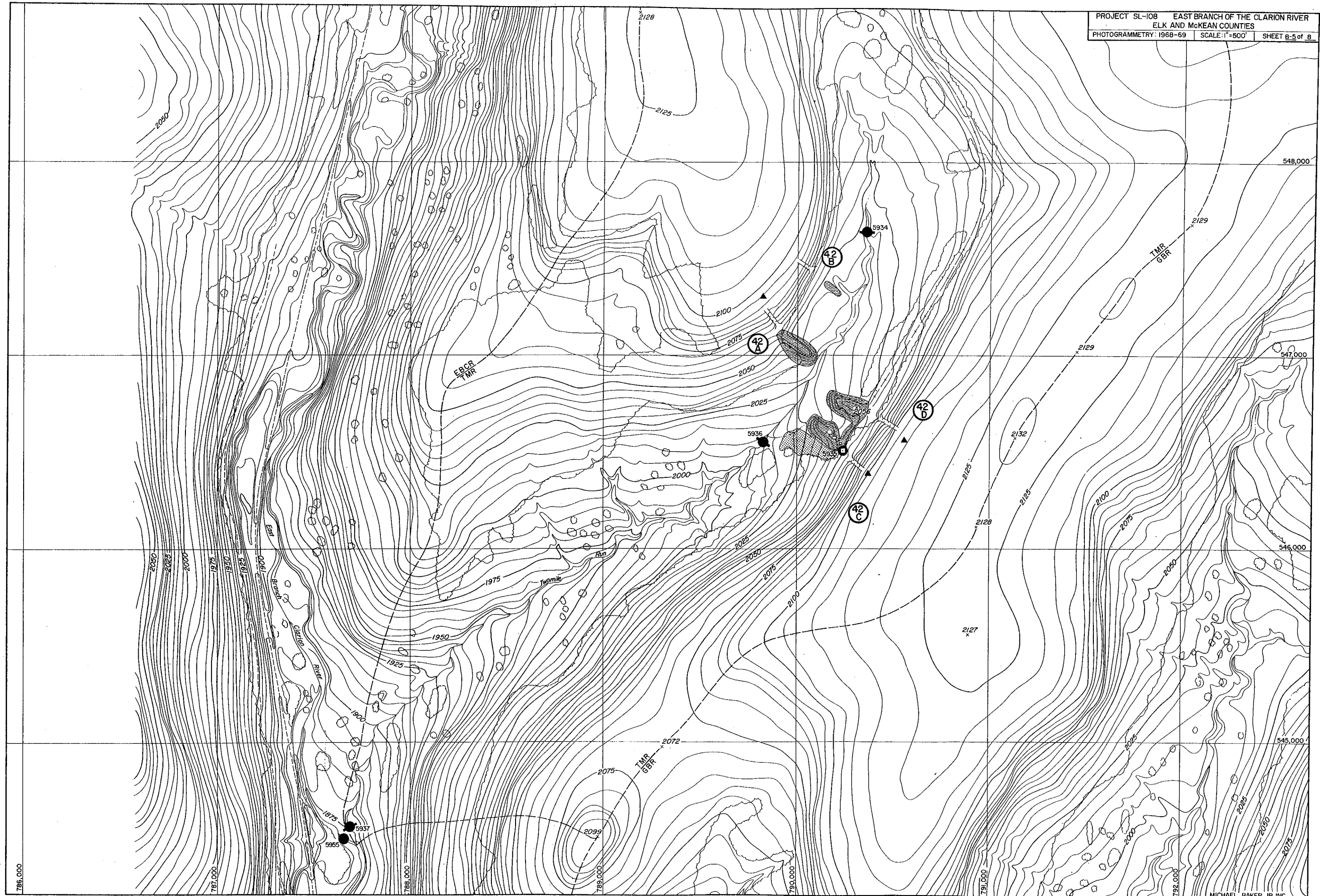


PROJECT SL-108 EAST BRANCH OF THE CLARION RIVER
ELK AND MCKEAN COUNTIES
PHOTOGRAMMETRY: 1968-69 SCALE: 1"=500' SHEET 25 of 14

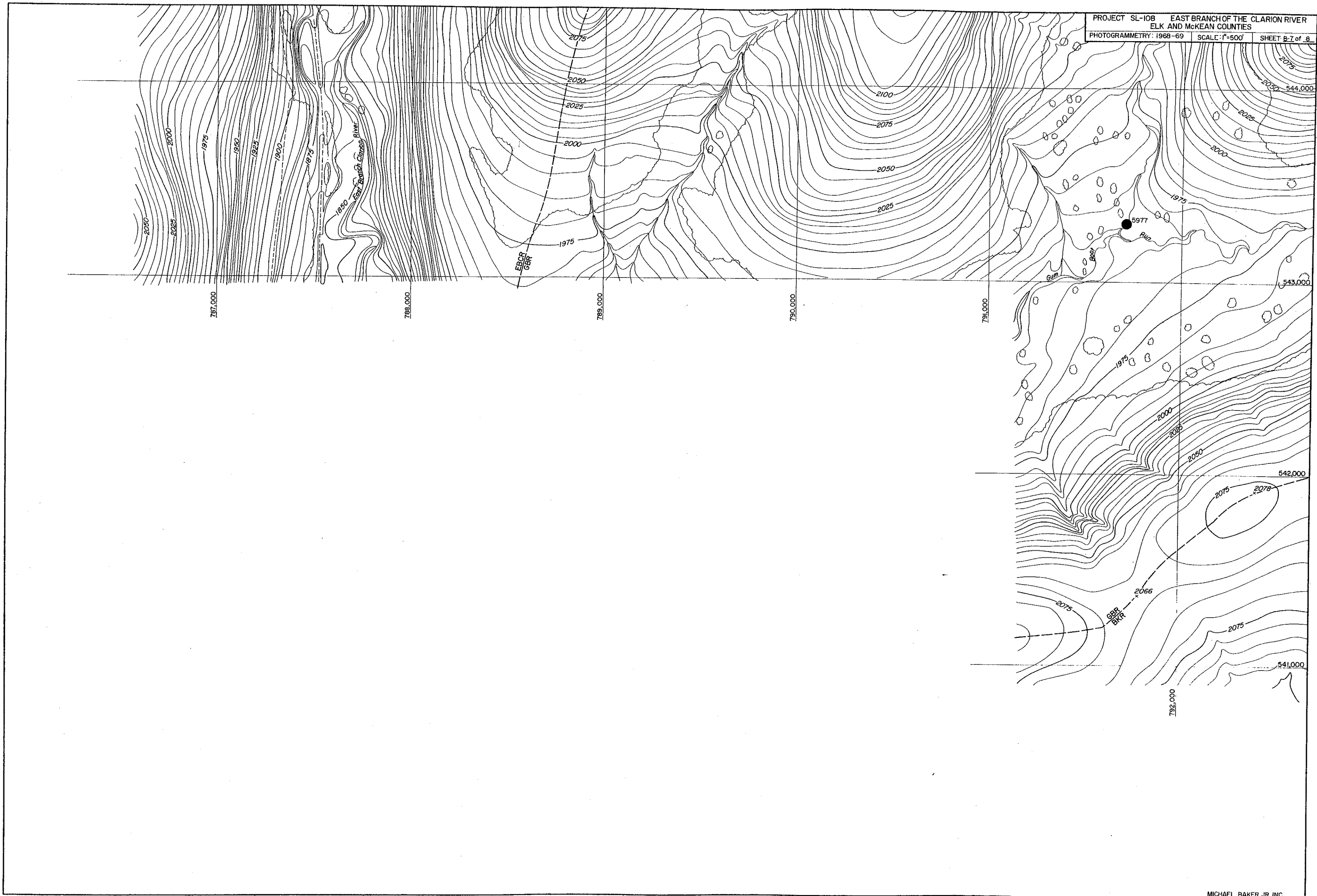








PROJECT SL-108 EAST BRANCH OF THE CLARION RIVER
ELK AND MCKEAN COUNTIES
PHOTOGRAMMETRY: 1968-69 SCALE: 1"=500' SHEET B-7 of 8



PROJECT SL-108 EAST BRANCH OF THE CLARION RIVER
ELK AND MCKEAN COUNTIES
PHOTOGRAMMETRY: 1968-69 SCALE: 1"=500' SHEET B-8 of 8

