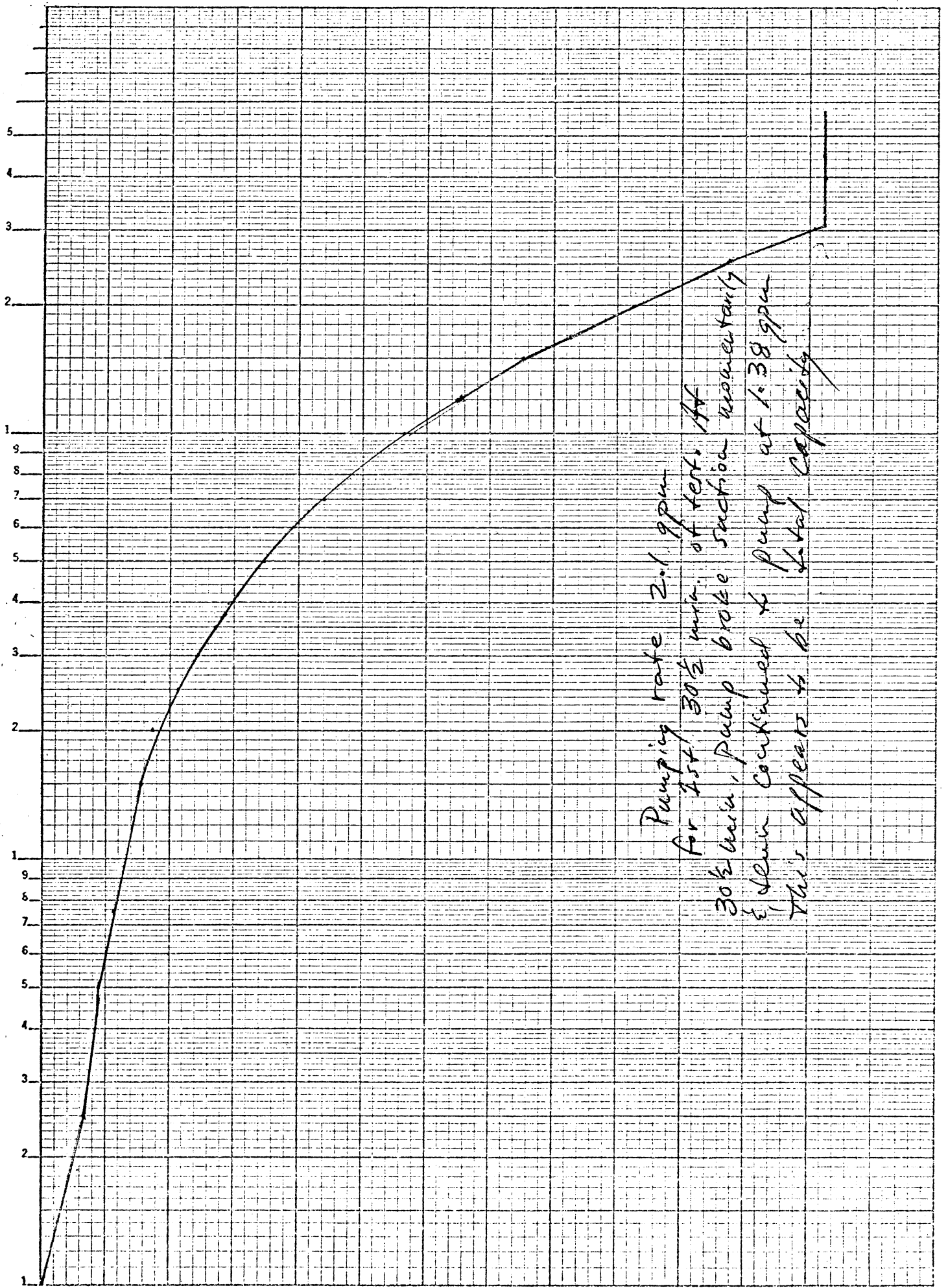


CR 1-12

KE #2  
3 CYCLES X 70 DIVISIONS • ALBANY, N.Y.  
KEUFFEL & ESSER CO.

46-107  
MADE IN U.S.A.



Pumping rate 2.1 gpm  
for 1st 30 1/2 min. of test. At  
30 1/2 min, pump broke suction momentarily  
& when continued to pump at 1.38 gpm  
this appears to be total capacity

REPORT ON HYDRAULIC PRESSURE TESTING

Boring No. 4  
 Sheet No. 1 of 1  
 Date February 2, 1974

Project Location Deer Creek Quick Start Project No. SL 193-1  
 Boring Location L Fasenmyer Property Elev. Top of Boring 1,565'  
 Driller W.F. Brown No. of Meter \_\_\_\_\_

**PART I DATA ON FLOW TEST**

Section of hole tested				Press. Gage Lbs./Sq. In.	Time Started	Time Stopped	Time Minutes	Meter Readings			
Depth		Elevation						At Start of Test gal.	At End of Test gal.	Total GAL. Water Used	GAL. Water Per Min.
From	To	From	To								
23'	24'	1,542	1,541	20			10	13.414	13.427	13	1.3
18'	23'	1,547	1,542	20			10	13.427	13.434	7	0.7

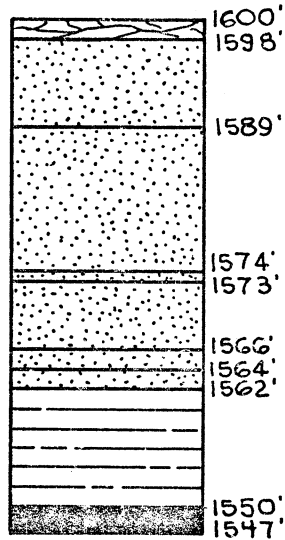
**PART II HOLDING TEST - MAXIMUM PRESSURE 50 p.s.i.**

Data on Pressure				Time on Each 10 lb. Drop				
Section of hole tested				Gage pressure at test intervals from				
Depth		Elevation		50-40 lb.	40-30 lb.	30-20 lb.	20-10 lb.	10-0 lb.
From	To	From	To	(or higher pressures if necessary)				
23'	24'	1,542	1,541	20-15 psi				
				no drop				
				20-15 psi				
18'	23'	1,547	1,542	no drop				

DESCRIPTION OF OPERATIONS AND GENERAL INFORMATION:  
 Elev. Top Rock - 1,550'  
 Bottom Boring - 1,503'

REMARKS: C.G. Walton

Inspector's Signature \_\_\_\_\_



CLAY

BROKEN BROWN SAND ROCK

HARD BROWN SAND ROCK (DAMP)

HARD GRAY SAND ROCK

HARD BROWN SAND ROCK

HARD GRAY SAND ROCK



COAL STREAK UPPER CLARION

HARD GRAY SAND ROCK

SHALE

50' WATER LEVEL 1-21-74

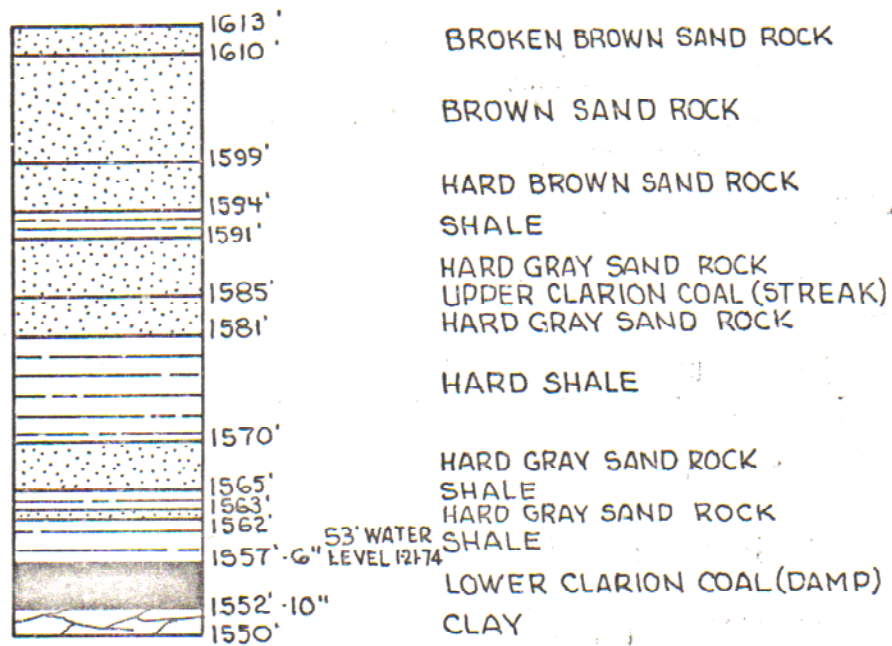
LOWER CLARION COAL SEAM  
(DID NOT HIT COAL, HIT CAVED  
ZONE FROM OLD WORKS AND  
LOST RETURN.)

DATE DRILLED: SEPT. 18, 1973

METHOD: AIR ROTARY

SCALE: 1"=20'

SL 193-1  
DEER CREEK  
DRILL HOLE NO. D-5



DATE DRILLED: SEPT. 18, 1973  
 METHOD: AIR ROTARY  
 SCALE: 1" = 20'

SL 193-1  
 DEER CREEK  
 DRILL HOLE NO. D-6

GWIN, DOBSON & FOREMAN, INC.

Eighth Avenue and Twelfth Street

P.O. Box 1589

Altoona, Pa. 16603

Phone (814) 943-5214

Date Time

Sample received 11/5/73

Sample Analyzed 11/8/73

Case Name

Deer Creek Quick Start

Project No.

SL 193-1

Region

County

Clarion

Municipality

Source

Receiving Stream

Deer Creek

Tributary to

Clarion River

Collected

Sample No.

Drill Hole #6

Chemist

Date:

Time:

Collected by

C.G. Walton

M.A.

SEND RESULTS TO:

pH 3.0

Acidity 2600 mg/l

Alkalinity 0 mg/l

Iron (total) 400 mg/l

Iron (ferrous) --- mg/l

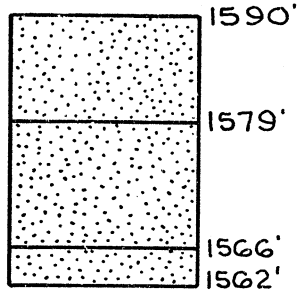
Sulfates 6100 mg/l

Other (specify)

- Planning & Dev. Research
- Ebensburg
- Reynoldsville
- Uniontown
- Pottsville
- Wilkes-Barre
- Other (specify)

J.Ward  
GDF

REMARKS:



BROKEN BROWN SAND ROCK

SOFT BROWN SAND ROCK

BADLY BROKEN BROWN SAND ROCK  
(LOST RETURN)

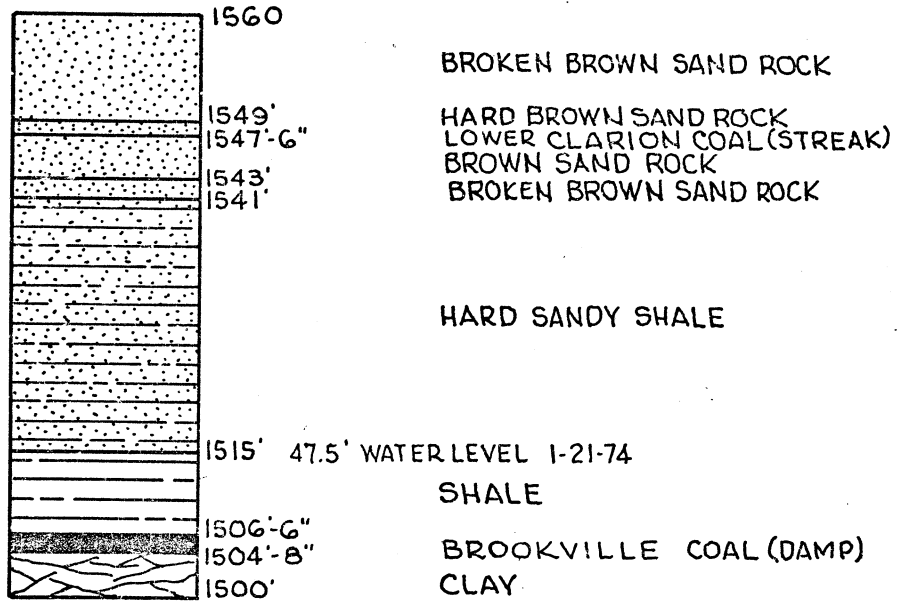
WATER LEVEL 1-21-74 DRY

DATE DRILLED: SEPT. 18, 1973

METHOD: AIR ROTARY

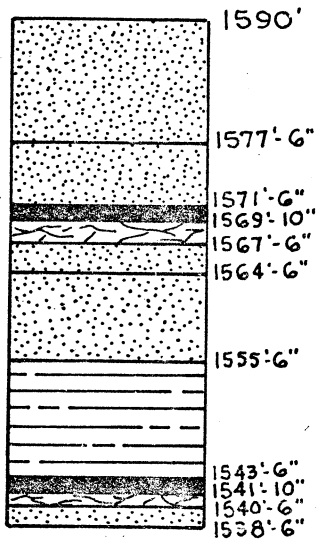
SCALE: 1" = 20'

SL 193-1  
DEER CREEK  
DRILL HOLE NO. D-7



DATE DRILLED: SEPT. 18, 1973  
 METHOD: AIR ROTARY  
 SCALE: 1" = 20'

SL 193-1  
 DEER CREEK  
 DRILL HOLE NO. D-8



1590'  
 BROKEN BROWN SAND ROCK  
 1577'-6"  
 2" COAL  
 BROWN SAND ROCK  
 1571'-6"  
 ← COAL UPPER CLARION  
 CLAY  
 1569'-10"  
 BROWN SAND ROCK  
 1567'-6"  
 1564'-6"  
 GRAY SAND ROCK  
 1555'-6"  
 GRAY SHALE  
 1543'-6"  
 COAL LOWER CLARION  
 CLAY  
 1541'-10"  
 GRAY SAND ROCK  
 1538'-6"

DATE DRILLED : OCT. 12, 1973  
 METHOD : AIR ROTARY  
 SCALE : 1" = 20'

SL 193-1  
 DEER CREEK  
 DRILL HOLE NO. D-9



GWIN, DOBSON & FOREMAN, INC.

Eighth Avenue and Twelfth Street

P.O. Box 1589

Altoona, Pa. 16603

Phone (814) 943-5214

Date Time

Sample received 11/5/73

Sample Analyzed 11/8-73

Case Name

Deer Creek Quick Start

Project No.

SL 193-1

Region

County

Clarion

Municipality

Source

Receiving Stream

Deer Creek

Tributary to

Clarion River

Collected

Sample No.

Drill Hole #9

Chemist

Date:

Time:

Collected by C.G. Walton

M.A.

SEND RESULTS TO:

pH 4.5

Acidity 8 mg/l

Alkalinity 0 mg/l

Iron (total) 0.1 mg/l

Iron (ferrous) --- mg/l

Sulfates 17 mg/l

Other (specify)

- Planning & Dev. Research
- Ebensburg
- Reynoldsville
- Uniontown
- Pottsville
- Wilkes-Barre
- Other (specify)

J. Ward  
GDF

REMARKS: