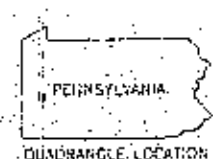
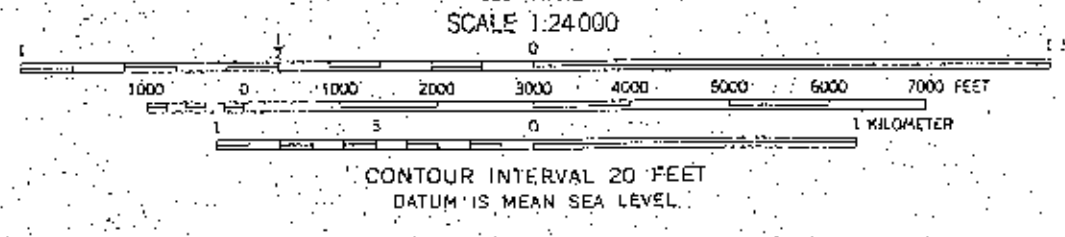
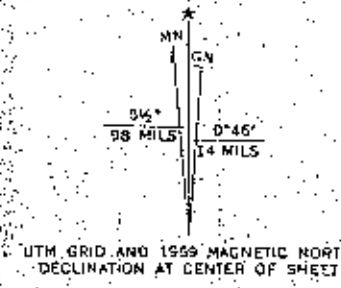


Mapped, edited, and published by the Geological Survey
Control by USGS, USC&GS, USGS, and the City of Pittsburgh
Topography from aerial photographs by photogrammetric methods
Aerial photographs taken 1952. Field check 1953. Revised 1960
Polyconic projection. 1927 North American datum
13,000-foot grid based on Pennsylvania coordinate system, south zone
1000-meter Universal Transverse Mercator grid ticks,
zone 17, shown in blue
First red dashed lines indicate selected fence and field lines where
generally visible on aerial photographs. This information is unchecked.
Red tint indicates areas in which only landmark buildings are shown.



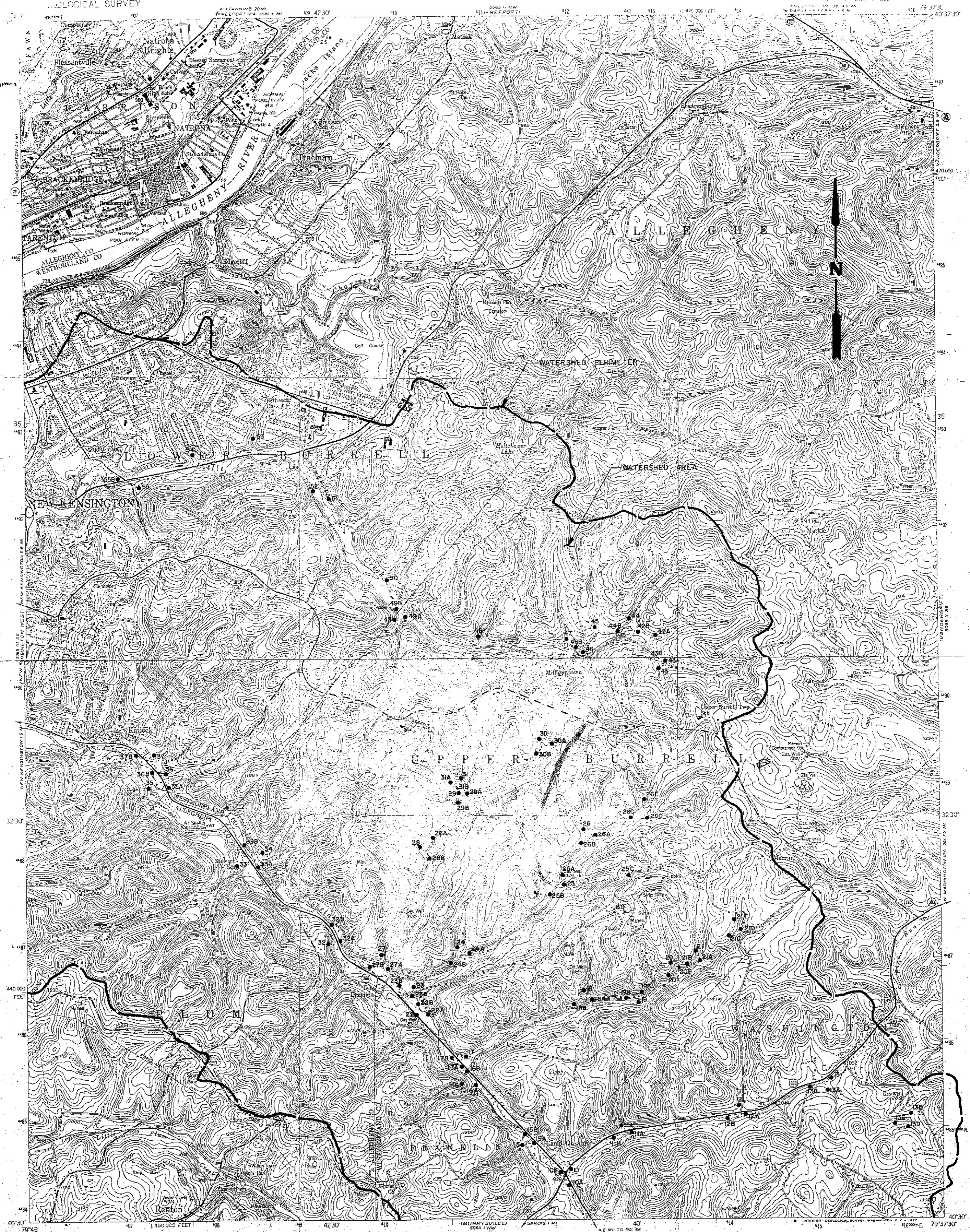
ROAD CLASSIFICATION	
Heavy-duty	Light-duty
Medium-duty	Unimproved dirt
○ Interstate Route	○ State Route

NEW KENSINGTON WEST, PA.
SE/4 NEW KENSINGTON 15 QUADRANGLE
N4030-W7945/7.5

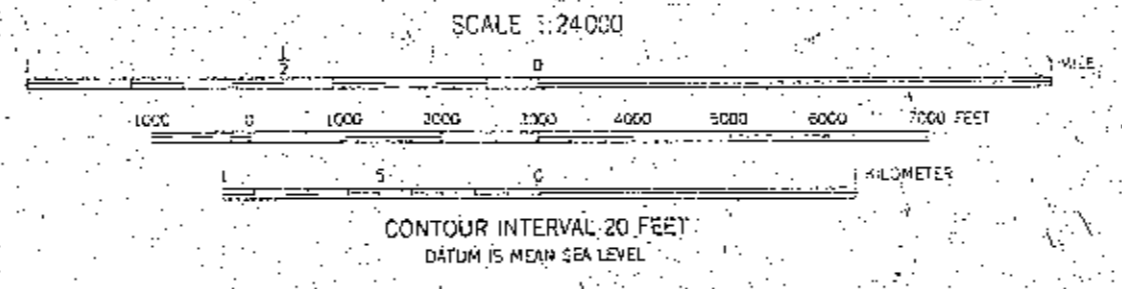
THIS MAP COMPLIES WITH NATIONAL MAP ACCURACY STANDARDS
FOR SALE BY U.S. GEOLOGICAL SURVEY, WASHINGTON, D.C. 20242
A FOLDER DESCRIBING TOPOGRAPHIC MAPS AND SYMBOLS IS AVAILABLE ON REQUEST

Revisions shown in blue compiled from aerial
photographs taken 1969. This information not
field checked.
Please do not make any alteration of urban areas.

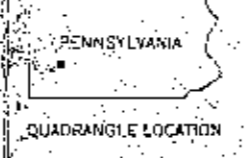
1960
PHOTO REVISION 1969
AMS 5065 III SE-SERIES V831



Mapped, edited, and published by the Geological Survey
Control by USGS and USC&GS
Topography from aerial photographs by multiple methods
Aerial photographs taken 1952. Field check 1953
Polyconic projection. 1927 North American datum.
10,000-foot grid based on Pennsylvania coordinate system, south zone
1000-meter Universal Transverse Mercator grid ticks, zone 17,
shown in blue
Red tint indicates areas in which only landmark buildings are shown
Revisions shown in purple compiled in cooperation with
State of Pennsylvania agencies from aerial photographs taken 1969
This information not field checked



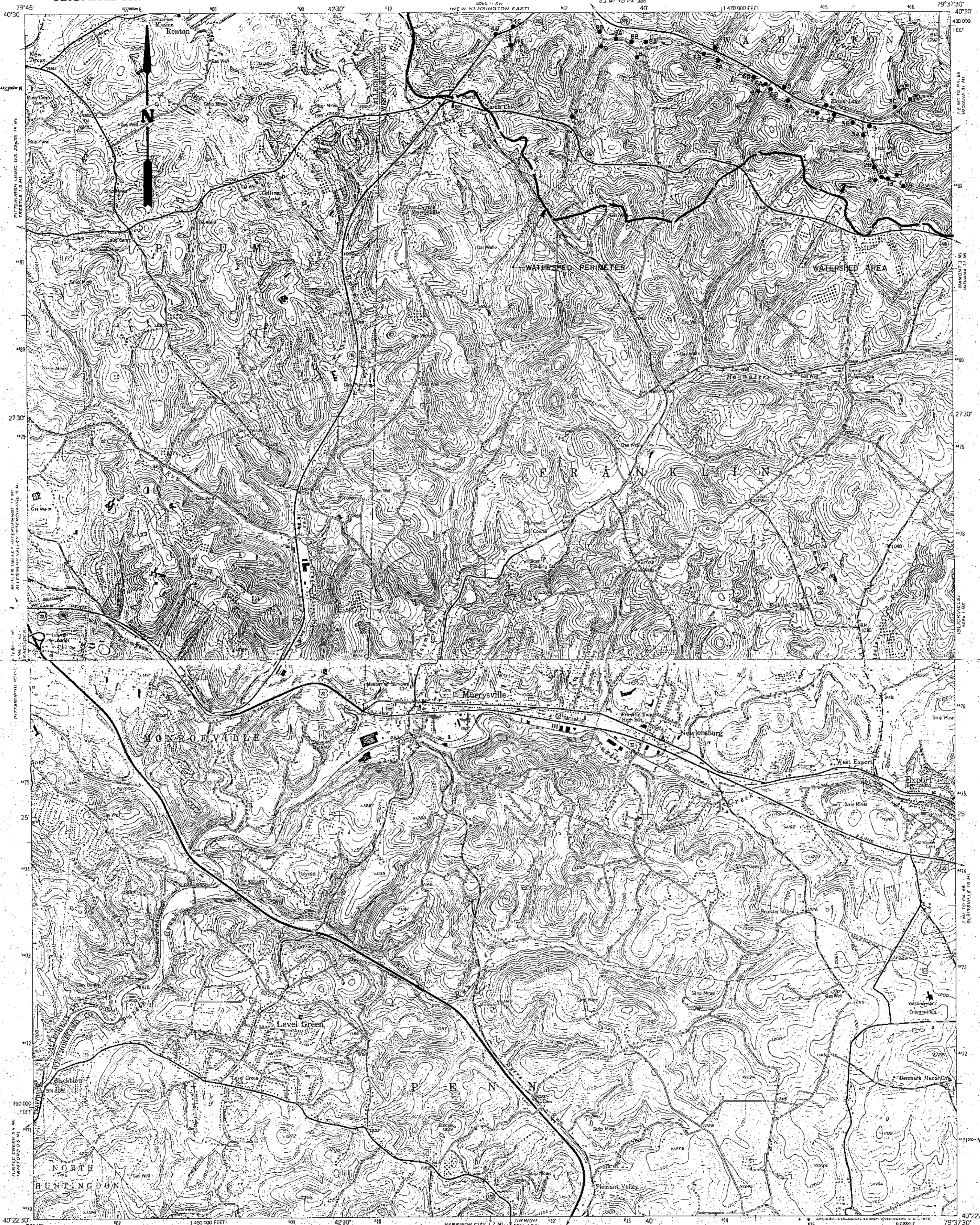
ROAD CLASSIFICATION
Heavy-duty _____ Light-duty _____
Medium-duty _____ Unimproved dirt _____
U. S. Route _____ State Route _____



NEW KENSINGTON EAST, PA.
SW/4 FREESPORT 15' QUADRANGLE
N4030-W7937.5/7.5

THIS MAP COMPLIES WITH NATIONAL MAP ACCURACY STANDARDS
FOR SALE BY U. S. GEOLOGICAL SURVEY, WASHINGTON, D. C. 20242
A FOLDER DESCRIBING TOPOGRAPHIC MAPS AND SYMBOLS IS AVAILABLE ON REQUEST

1953
PHOTOREVISED 1969
AMS 5099 II SW - SERIES V83
ENCLOSURE NO. 2



Mapped, edited, and published by the Geological Survey
Control by USGS and USC&GS
Topography from aerial photographs by multiplex methods
Aerial photographs taken 1952. Field check 1953.
Previous edition: 1927 North American datum
10,000-foot grid based on Pennsylvania coordinate system, south zone
1000-meter Universal Transverse Mercator grid ticks, zone 17,
shown in blue
Revisions shown in purple compiled in cooperation with
State of Pennsylvania agencies, from aerial photographs taken 1969.
This information not field checked.

UTM GRID AND 1980 MAGNETIC NORTH
DECLINATION AT CENTER OF SHEET

SCALE 1:24,000
HARRISON CITY 1.7 MI. W. IRVING
GREENSBURG 9.1 MI. S.W.
IRVING INTERCHANGE 6.7 MI. N.E.
REDFORD INTERCHANGE 8.4 MI. E.

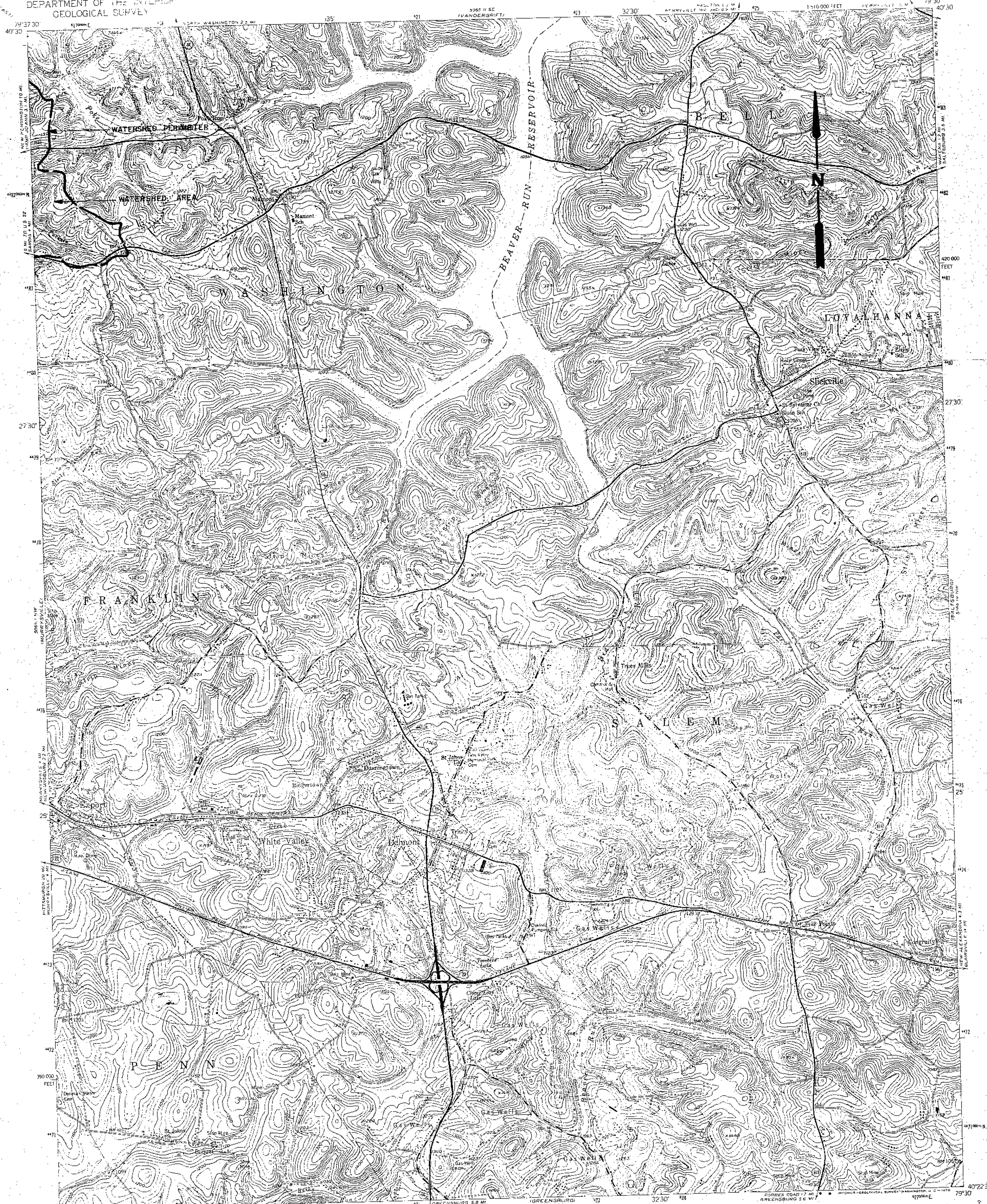
CONTOUR INTERVAL 20 FEET
DATUM IS MEAN SEA LEVEL

ROAD CLASSIFICATION
Heavy-duty _____ Light-duty _____
Medium-duty _____ Unimproved dirt _____
U.S. Route _____ State Route _____
Interstate Route _____

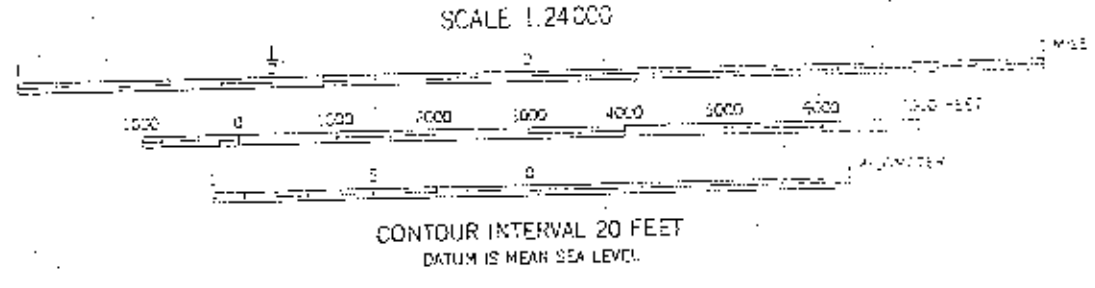
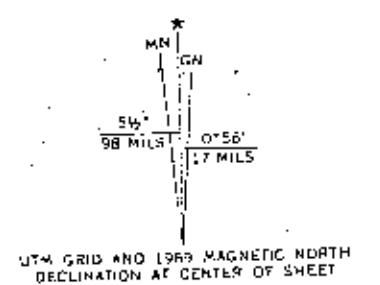
MURRYSVILLE, PA.
NW/4 GREENSBURG 15 QUADRANGLE
N4022.5-W7937.5/75

1953
PHOTOREVISED 1969
AMS 5084 1 NW-SERIES V831

THIS MAP COMPLIES WITH NATIONAL MAP ACCURACY STANDARDS
FOR SALE BY U.S. GEOLOGICAL SURVEY, WASHINGTON, D.C. 20242
A FOLDER DESCRIBING TOPOGRAPHIC MAPS AND SYMBOLS IS AVAILABLE ON REQUEST



Mapped, edited, and published by the Geological Survey
Control by USGS and USC&GS
Topography by photogrammetric methods from aerial
photographs taken 1952. Field checked 1954.
Polyconic projection. 1927 North American datum
10,000-foot grid based on Pennsylvania coordinate system, south zone
1000-meter Universal Transverse Mercator grid ticks,
zone 17, shown in blue
Revisions shown in purple compiled in cooperation with
State of Pennsylvania agencies from aerial photographs taken 1959.
This information not for publication



ROAD CLASSIFICATION

Heavy duty	Light duty
Medium duty	Unimproved dirt
U.S. Route	State Route

THIS MAP COMPLIES WITH NATIONAL MAP ACCURACY STANDARDS
FOR SALE BY U.S. GEOLOGICAL SURVEY, WASHINGTON, D.C. 20242
A FOLDER DESCRIBING TOPOGRAPHIC MAPS AND SYMBOLS IS AVAILABLE ON REQUEST

SLICKVILLE, PA.
NE 4 GREENSBURG 15 QUADRANGLE
N4022 S - W7930 / 7.5
1954
PHOTOREVISED 1959
AMS 5084 I NE - SERIES 7831